

Underground car park coating system (OS 8)

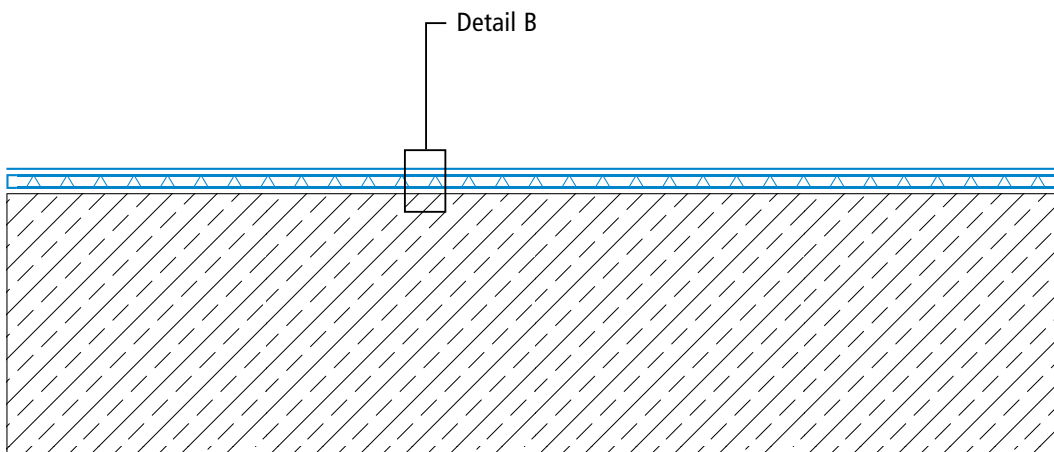
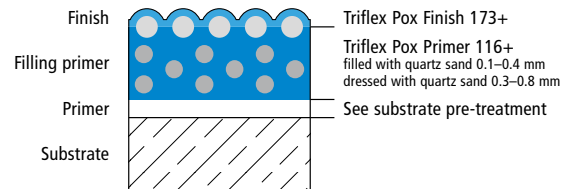
Triflex CPS-C+ – Version 2



System drawings

Surface, version 2

System design, version 2 – Detail B



Drawing no.: CPS-C+-1902

Height differences between fleece overlaps are exaggerated

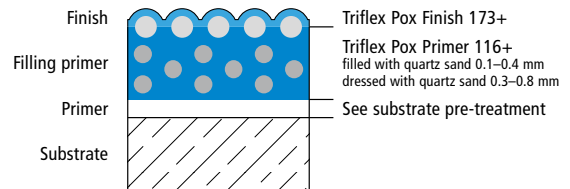
Triflex CPS-C+ – Version 2



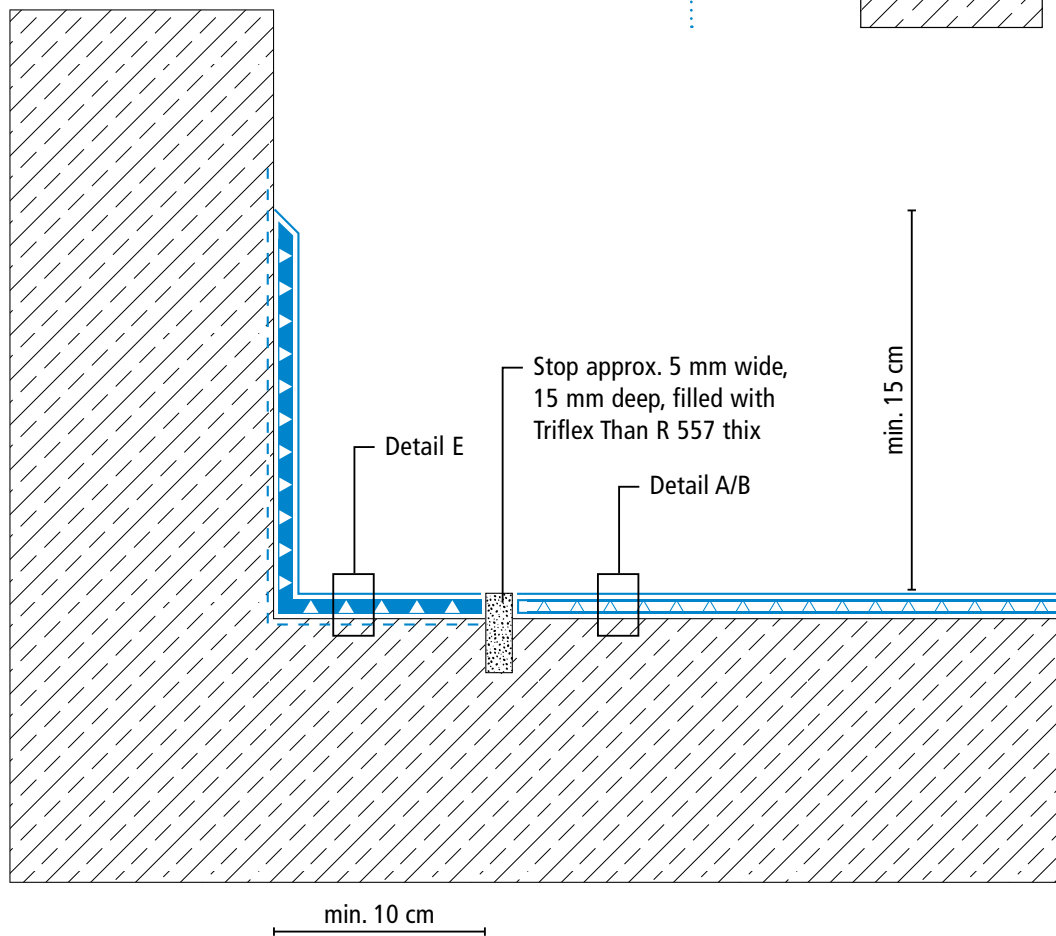
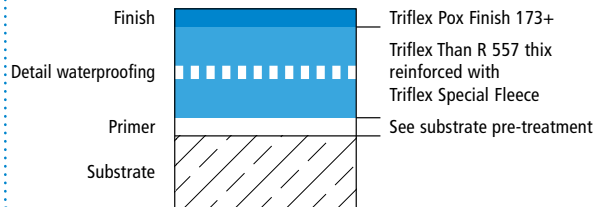
System drawings

Wall junction

System design, version 2 – Detail B



System design – Detail E



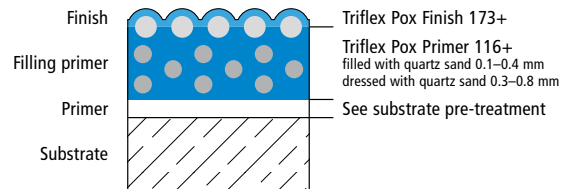
Triflex CPS-C+ – Version 2



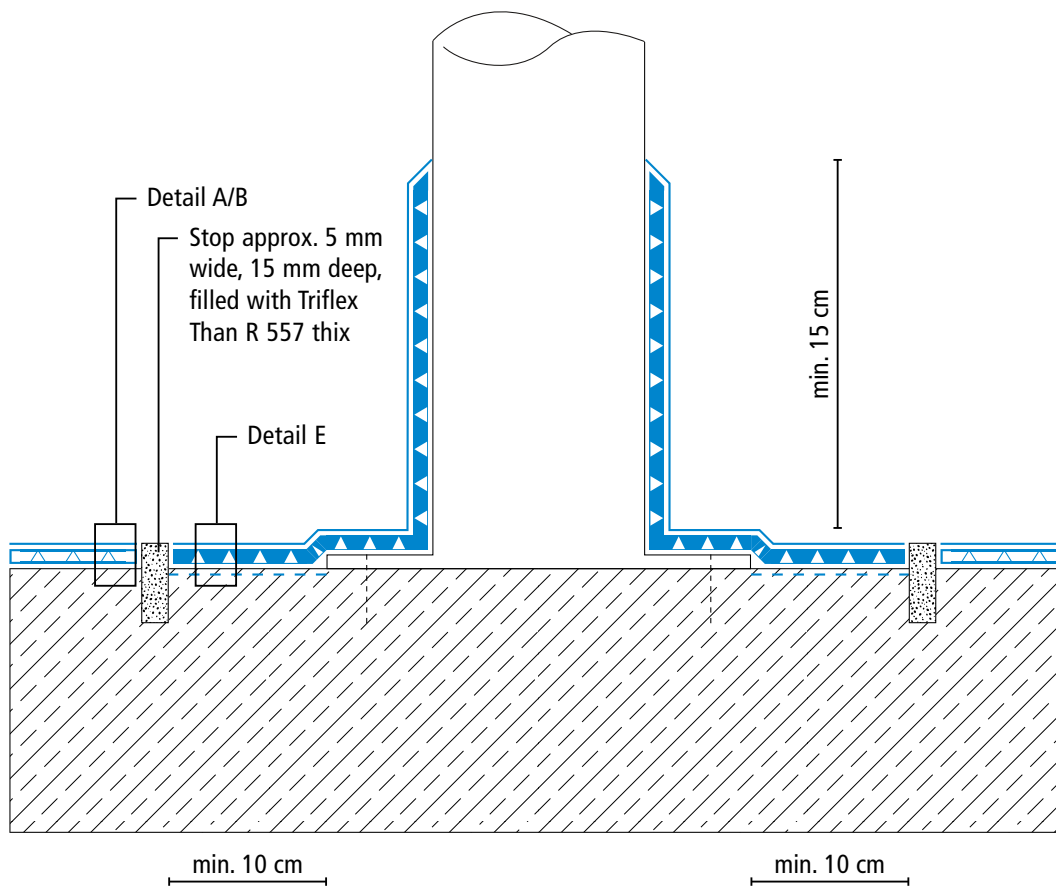
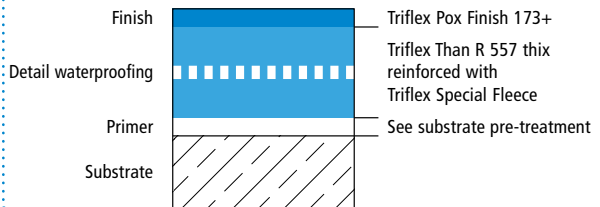
System drawings

Settlement joint

System design, version 2 – Detail B



System design – Detail E



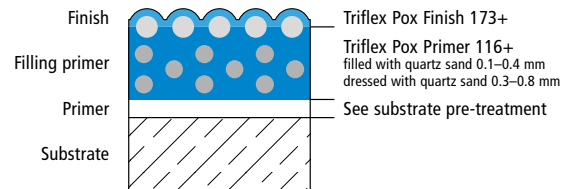
Triflex CPS-C+ – Version 2



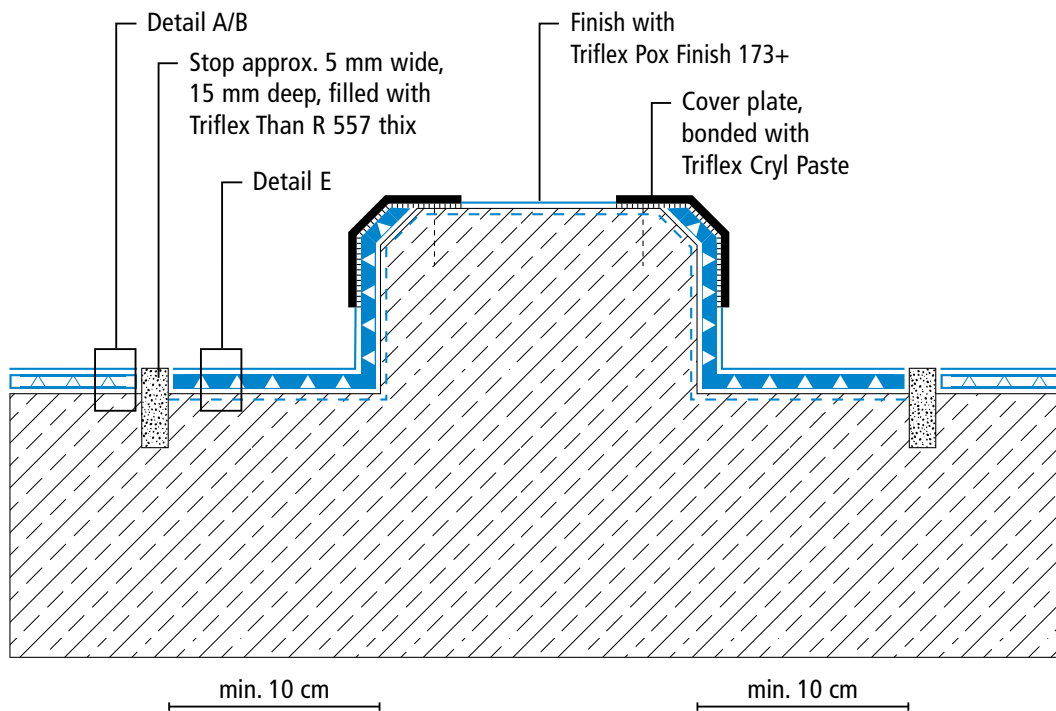
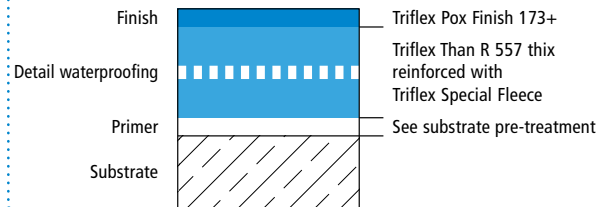
System drawings

Kerb

System design, version 2 – Detail B



System design – Detail E



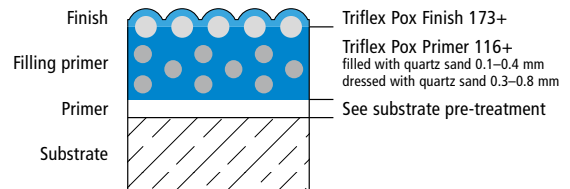
Triflex CPS-C+ – Version 2



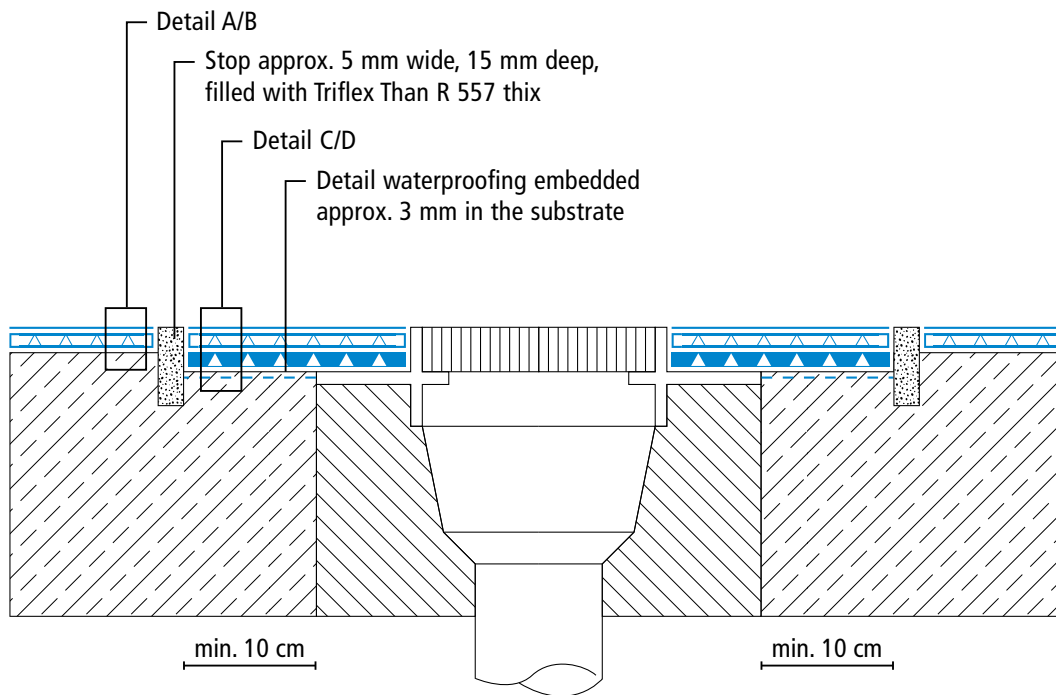
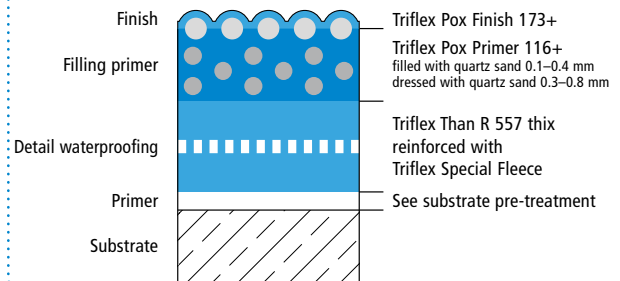
System drawings

Gully

System design, version 2 – Detail B



System design, version 2 – Detail D



Drawing no.: CPS-C+-1906

Height differences between fleece overlaps are exaggerated

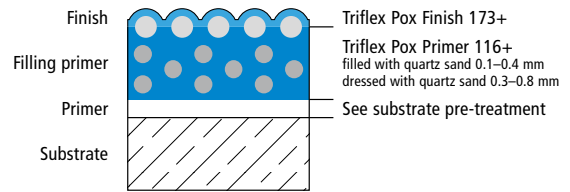
Triflex CPS-C+ – Version 2



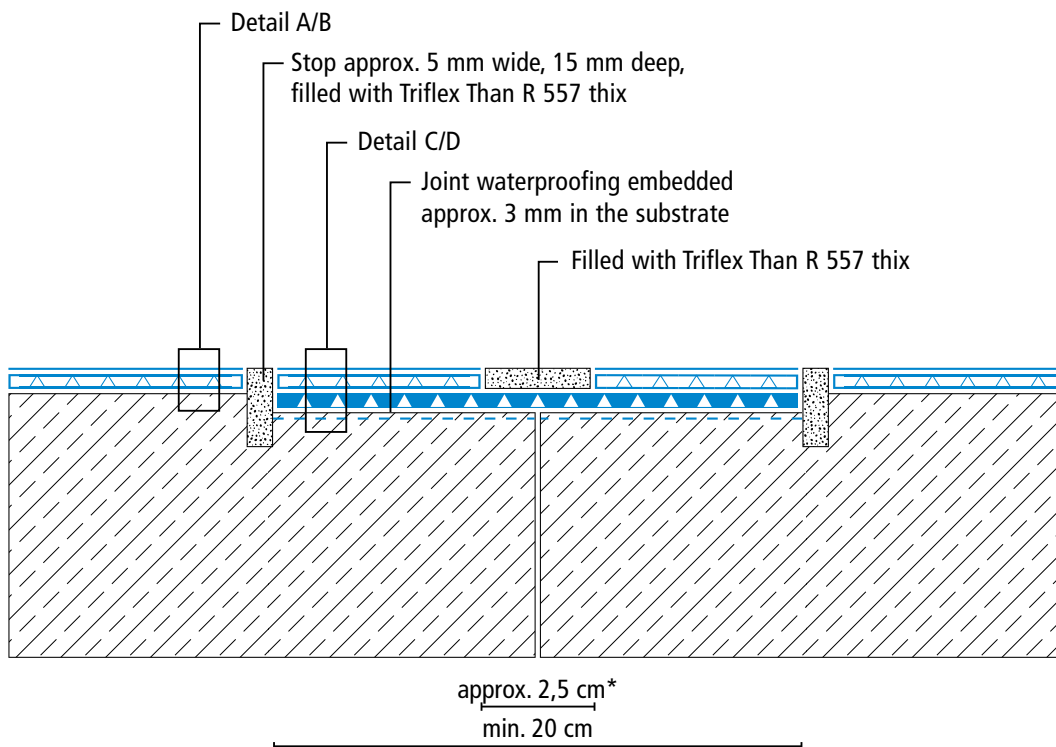
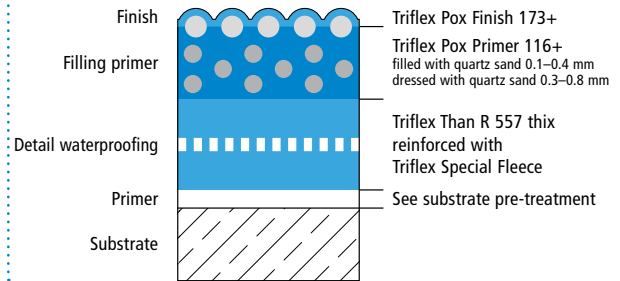
System drawings

Construction joint

System design, version 2 – Detail B



System design, version 2 – Detail D



Drawing no.: CPS-C+-1907

* Omission of filling primer (see system description)

Height differences between fleece overlaps are exaggerated

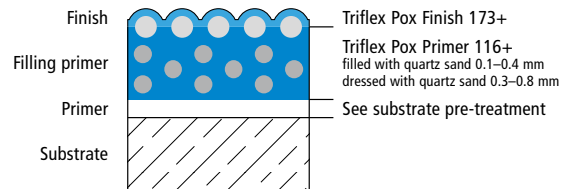
Triflex CPS-C+ – Version 2



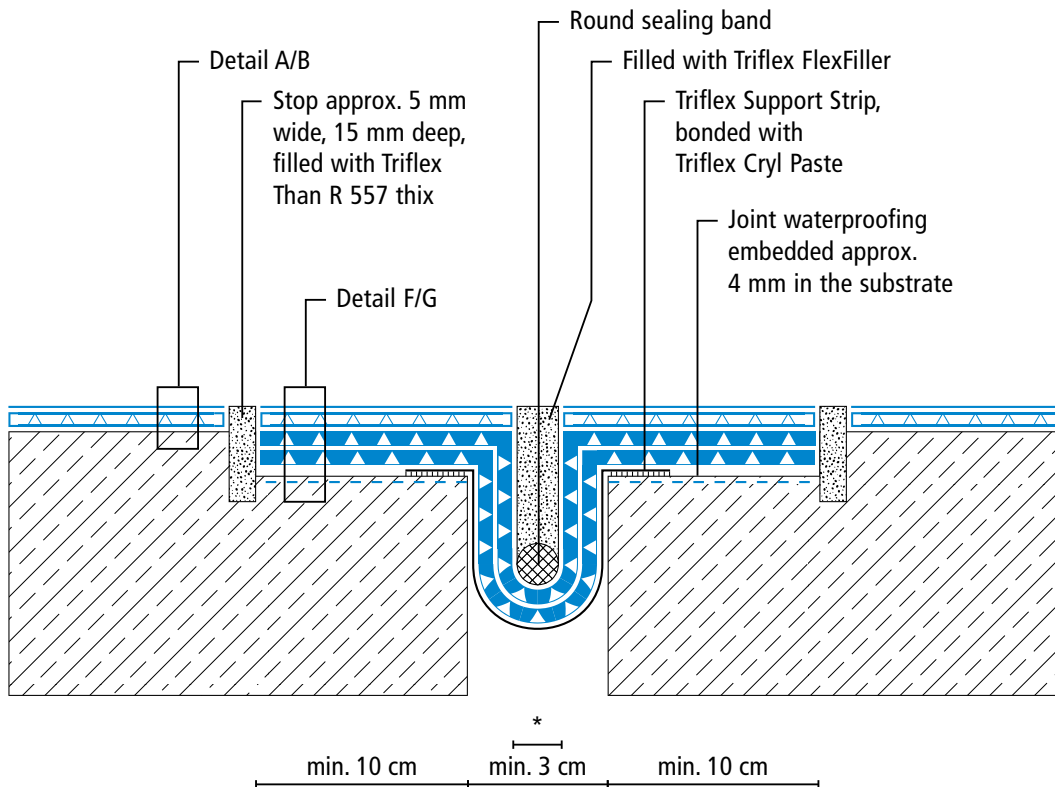
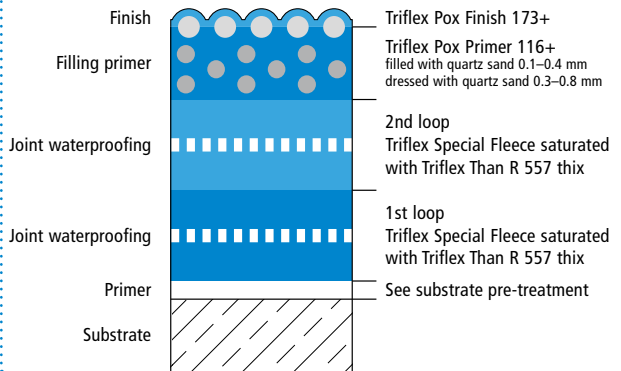
System drawings

Settlement joint surface

System design, version 2 – Detail B



Systemaufbau, Variante 2 – Detail G



Drawing no.: CPS-C+-1908

* Omission of filling primer and finish (see system description)

Height differences between fleece overlaps are exaggerated

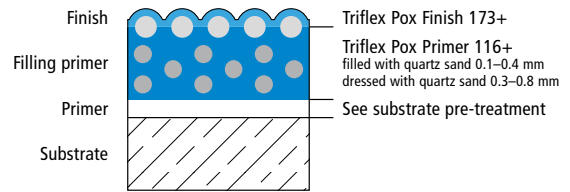
Triflex CPS-C+ – Version 2



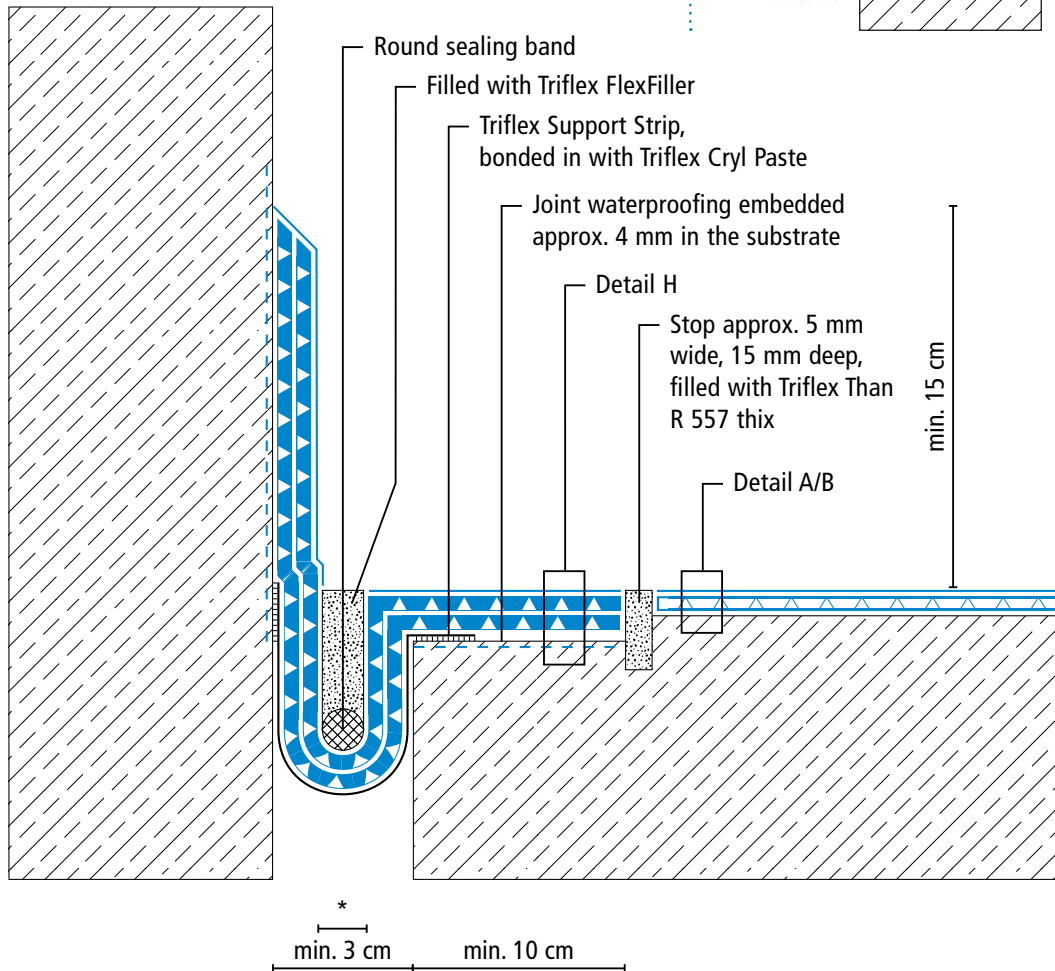
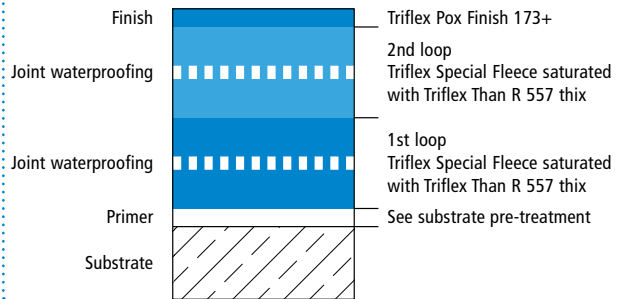
System drawings

Settlement joint – wall junction

System design, version 2 – Detail B



System design – Detail H



Drawing no.: CPS-C+-1909

* Omission of finish (see system description)

Height differences between fleece overlaps are exaggerated