



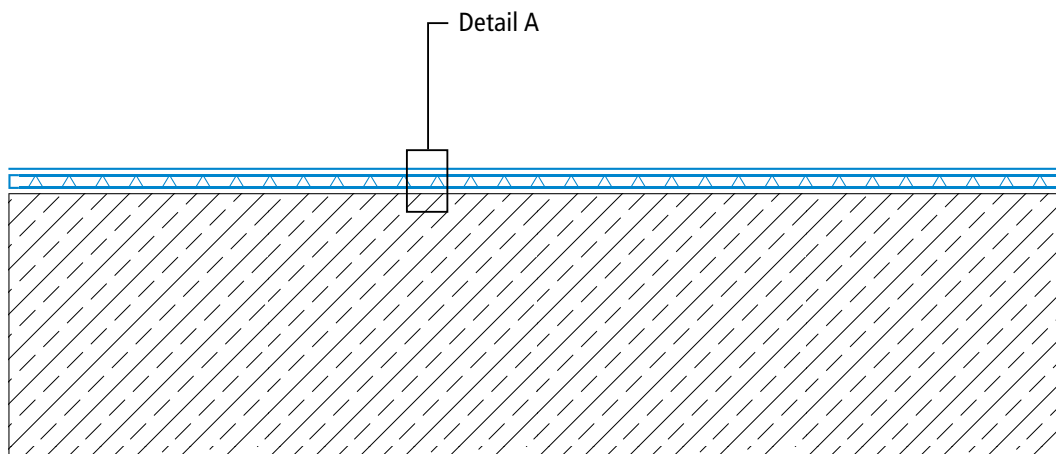
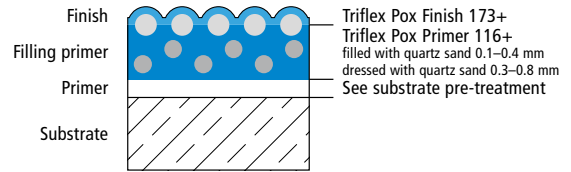
Underground car park coating system (OS 8)

# Triflex CPS-C+ – Version 1

## System drawings

Surface, version 1

System design, version 1 – Detail A



Drawing no.: CPS-C+-1901

Height differences between fleece overlaps are exaggerated

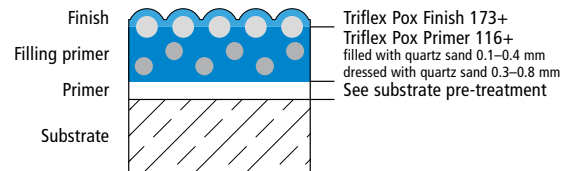
# Triflex CPS-C+ – Version 1



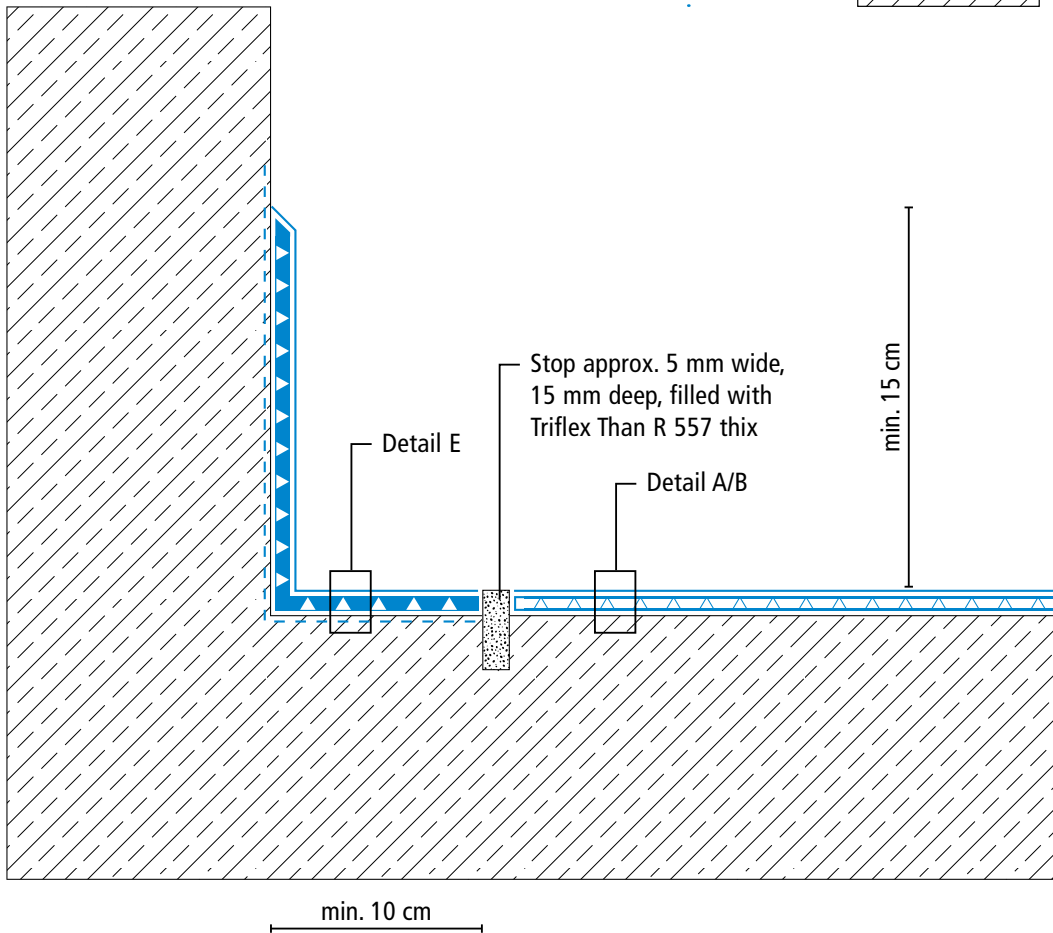
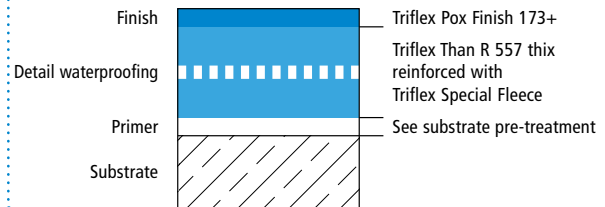
## System drawings

### Wall junction

System design, version 1 – Detail A



System design – Detail E



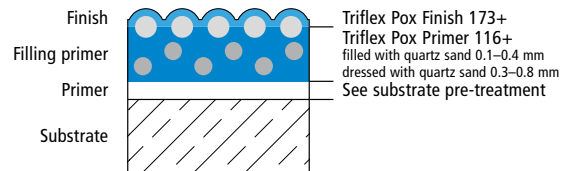
# Triflex CPS-C+ – Version 1



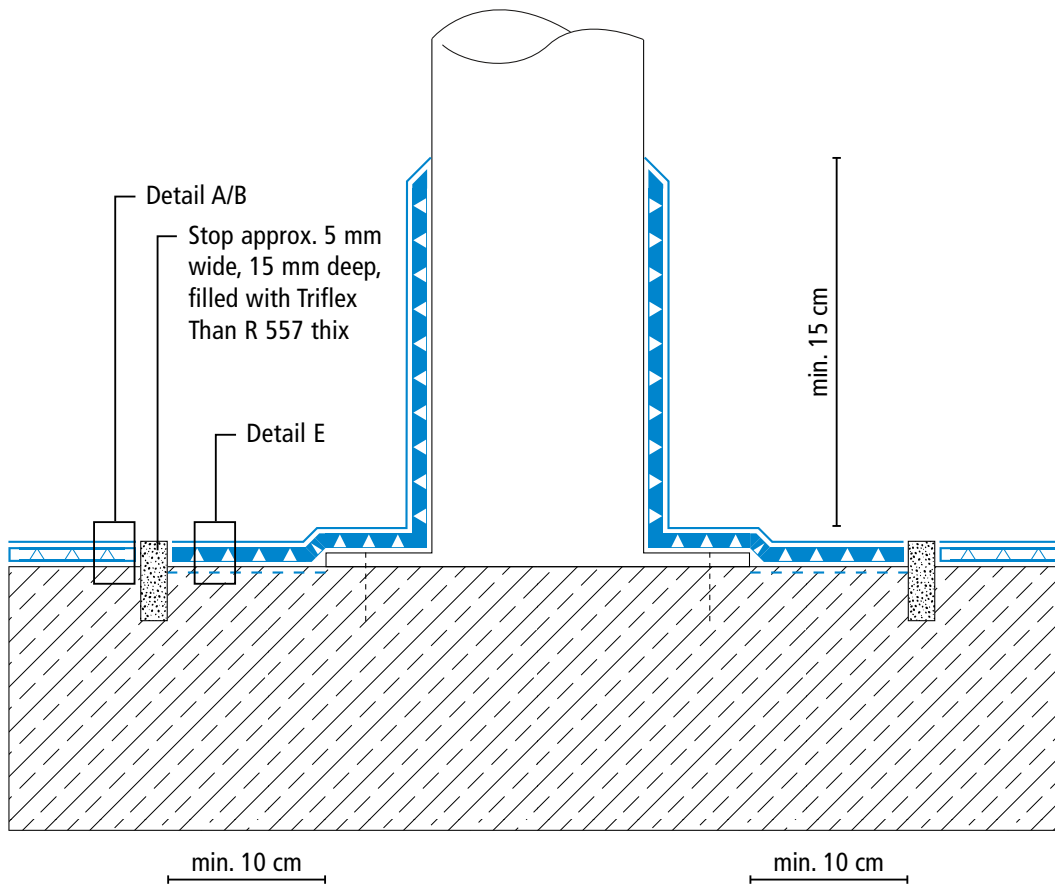
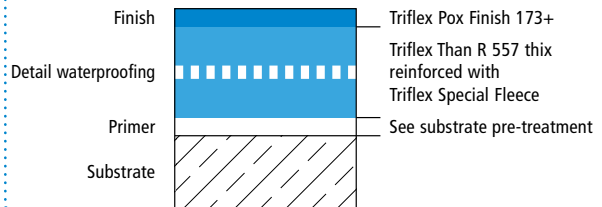
## System drawings

### Settlement joint

#### System design, version 1 – Detail A



#### System design – Detail E



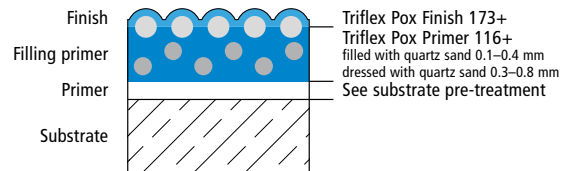
# Triflex CPS-C+ – Version 1



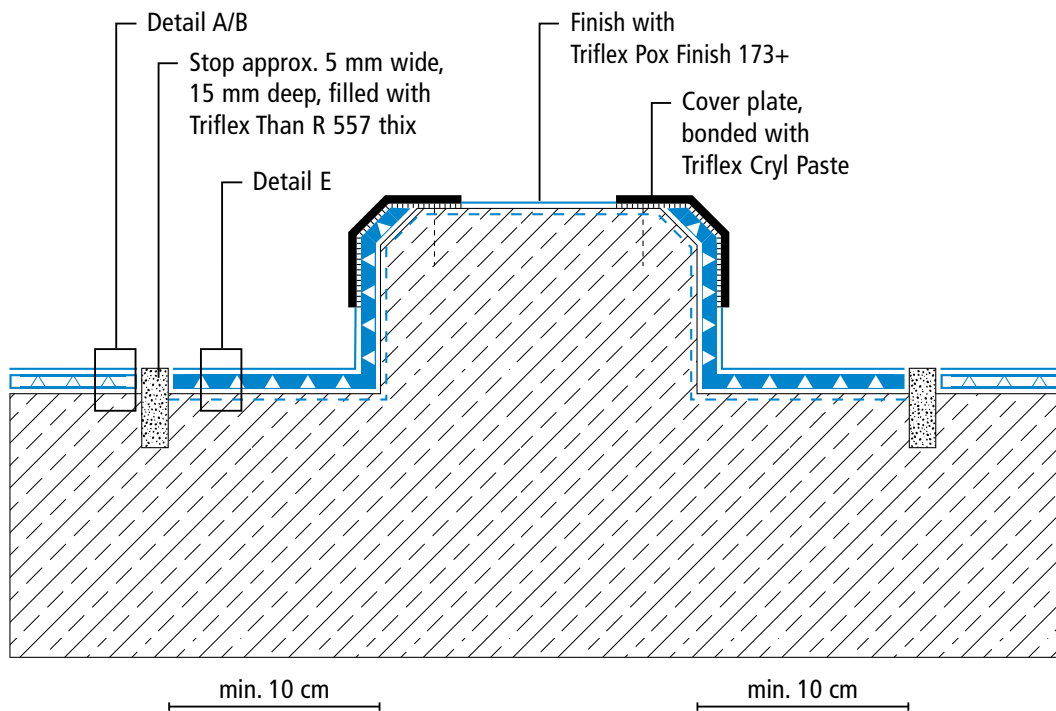
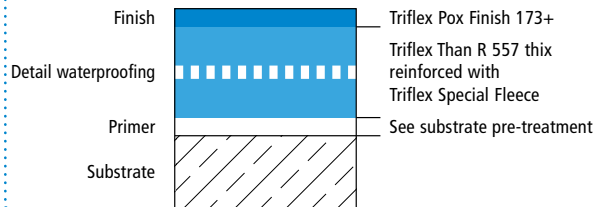
## System drawings

### Kerb

System design, version 1 – Detail A



System design – Detail E



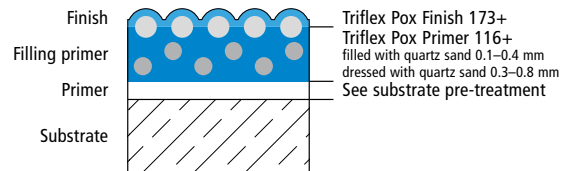
# Triflex CPS-C+ – Version 1



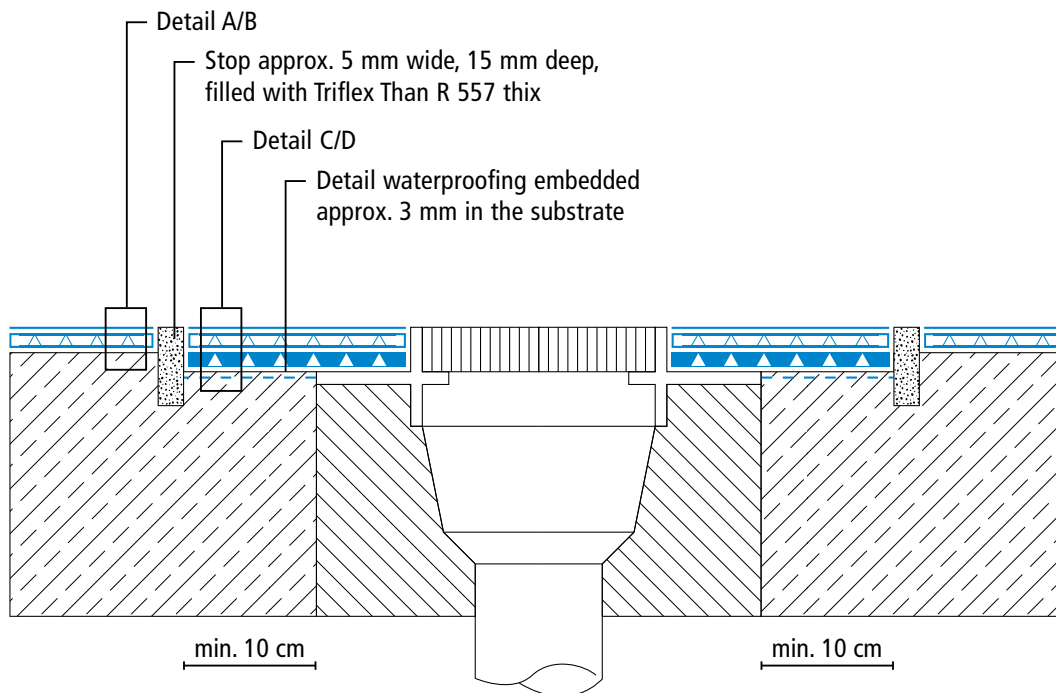
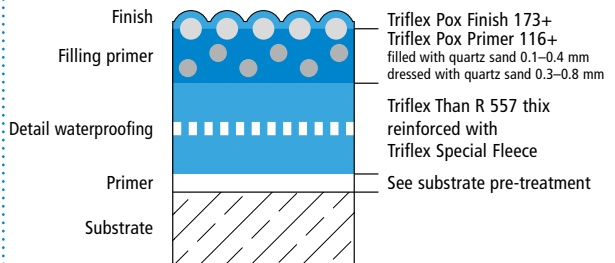
## System drawings

### Gully

System design, version 1 – Detail A



System design, version 1 – Detail C



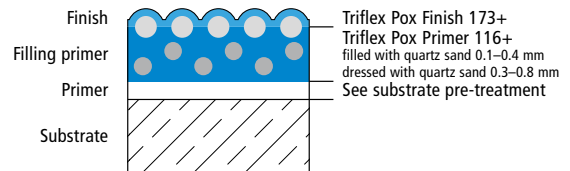
# Triflex CPS-C+ – Version 1



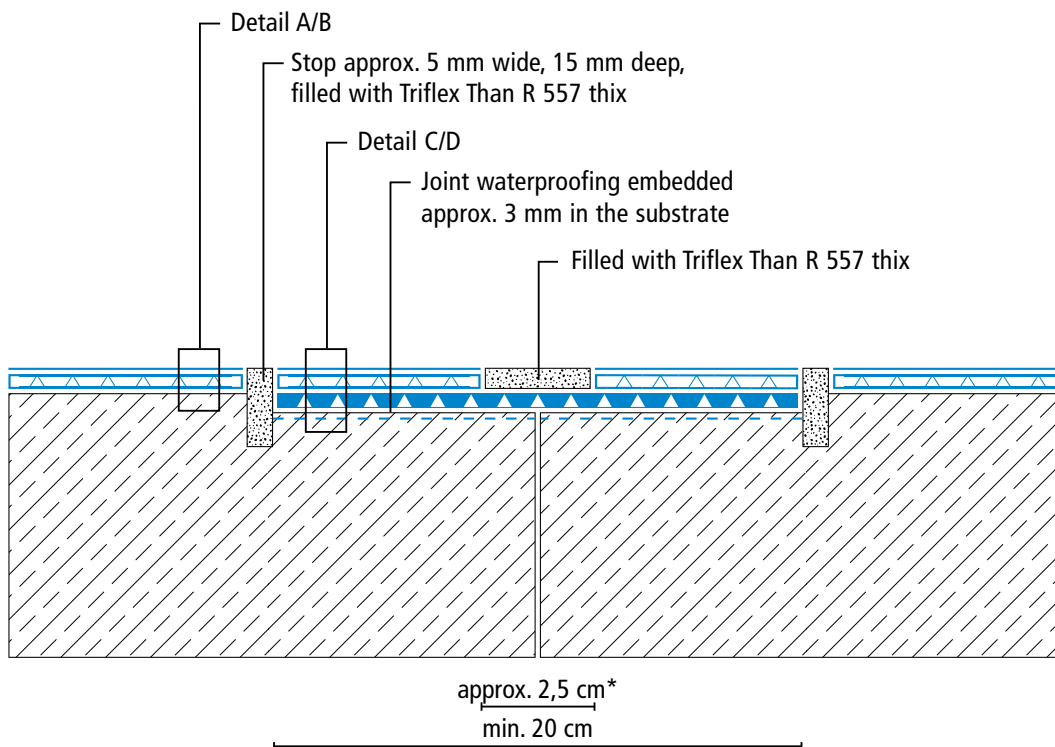
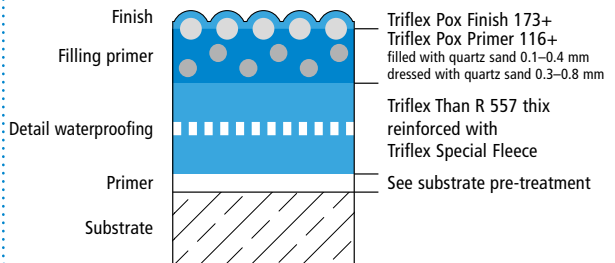
## System drawings

### Construction joint

#### System design, version 1 – Detail A



#### System design, version 1 – Detail C



Drawing no.: CPS-C+-1907

\* Omission of filling primer (see system description)

Height differences between fleece overlaps are exaggerated

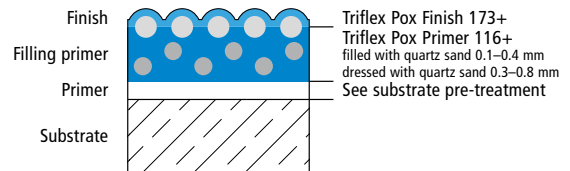
# Triflex CPS-C+ – Version 1



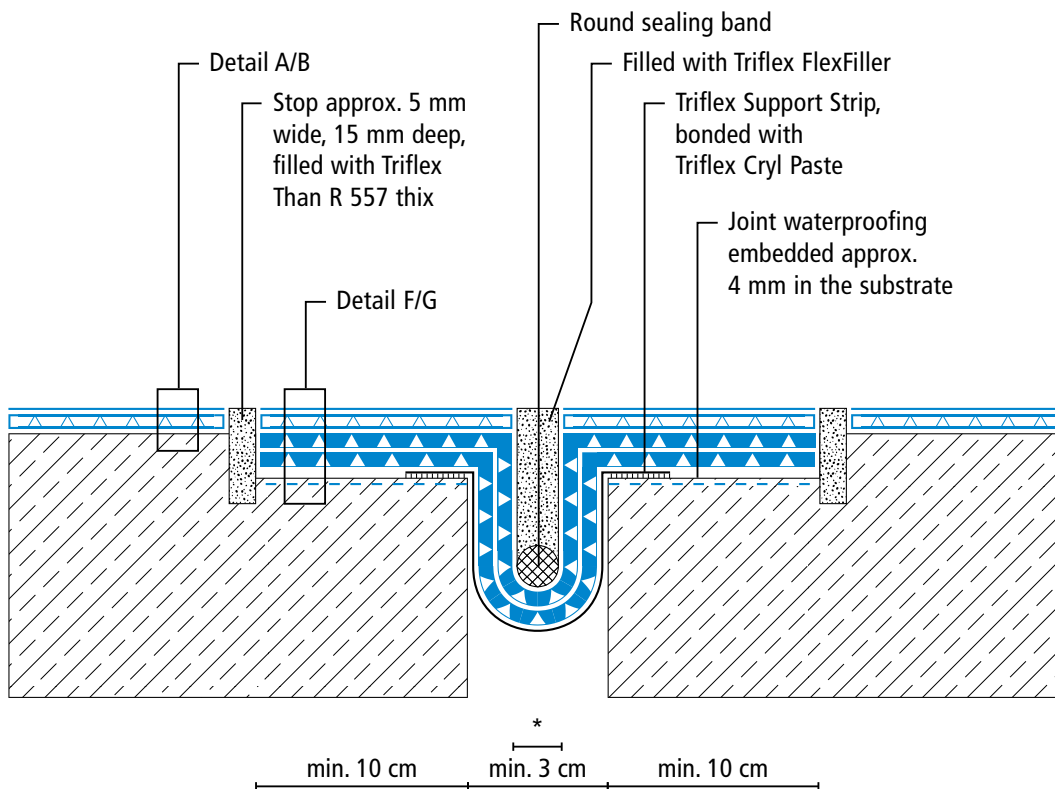
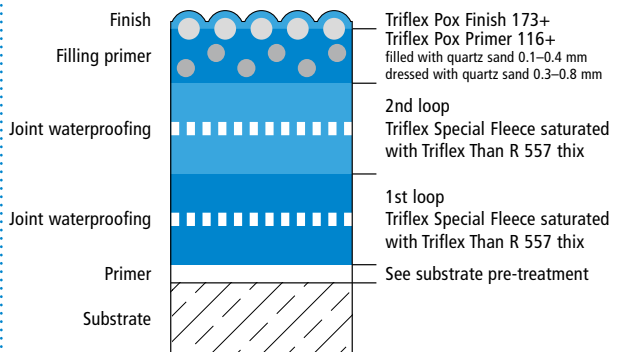
## System drawings

### Settlement joint surface

#### System design, version 1 – Detail A



#### System design, version 1 – Detail F



Drawing no.: CPS-C+-1908

\* Omission of filling primer and finish (see system description)

Height differences between fleece overlaps are exaggerated

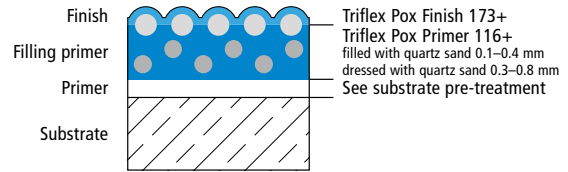
# Triflex CPS-C+ – Version 1



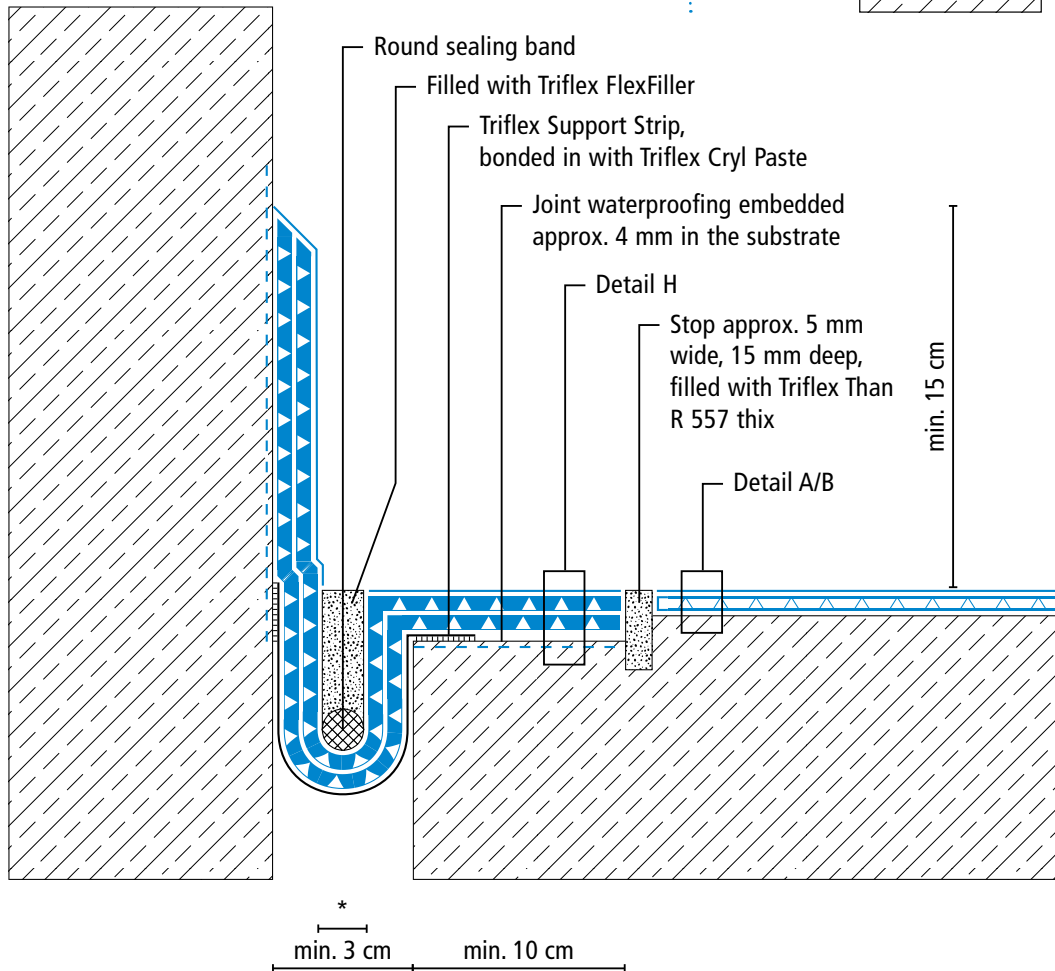
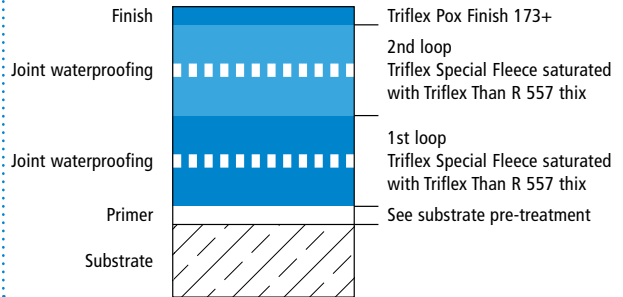
## System drawings

### Settlement joint – wall junction

System design, version 1 – Detail A



System design – Detail H



Drawing no.: CPS-C+-1909

\* Omission of finish (see system description)

Height differences between fleece overlaps are exaggerated