

Interior deck coating system (OS 11b)

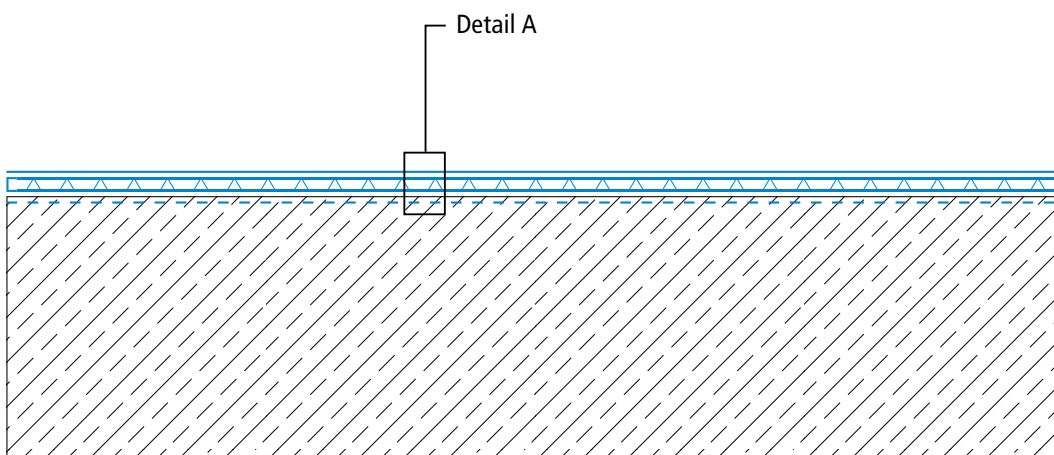
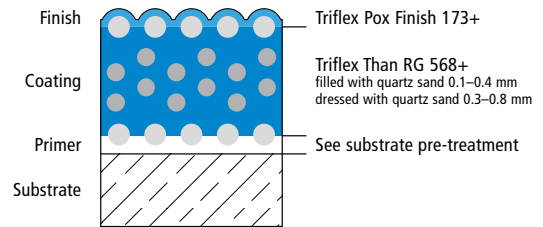
Triflex CPS-I+



System drawings

Surface

System design – Detail A



Drawing no.: CPS-I+-1801

Height differences between fleece overlaps are exaggerated

Interior deck coating system (OS 11b)

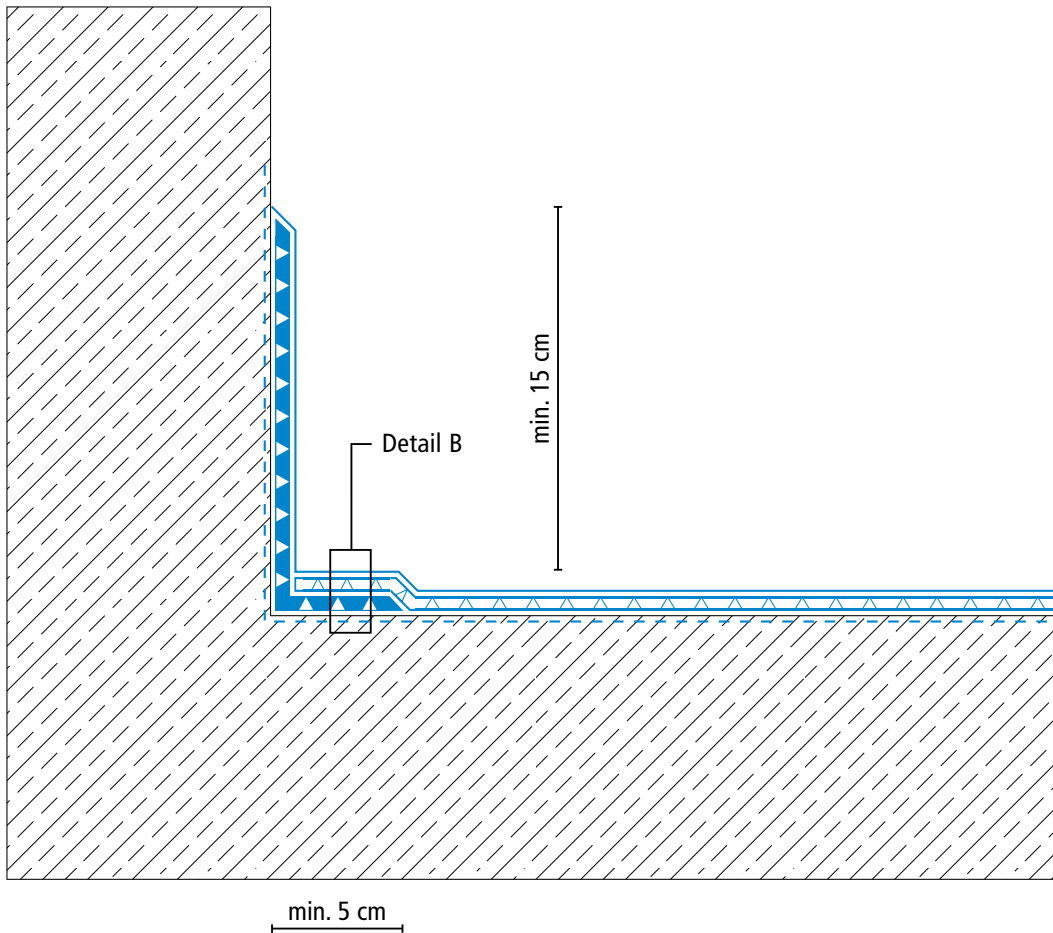
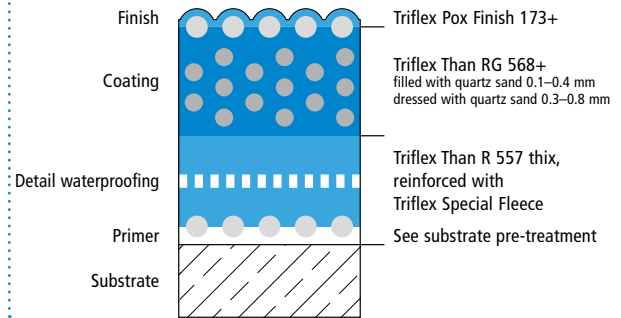
Triflex CPS-I+



System drawings

Wall junction

System design – Detail B



Drawing no.: CPS-I+-1802

Height differences between fleece overlaps are exaggerated

Interior deck coating system (OS 11b)

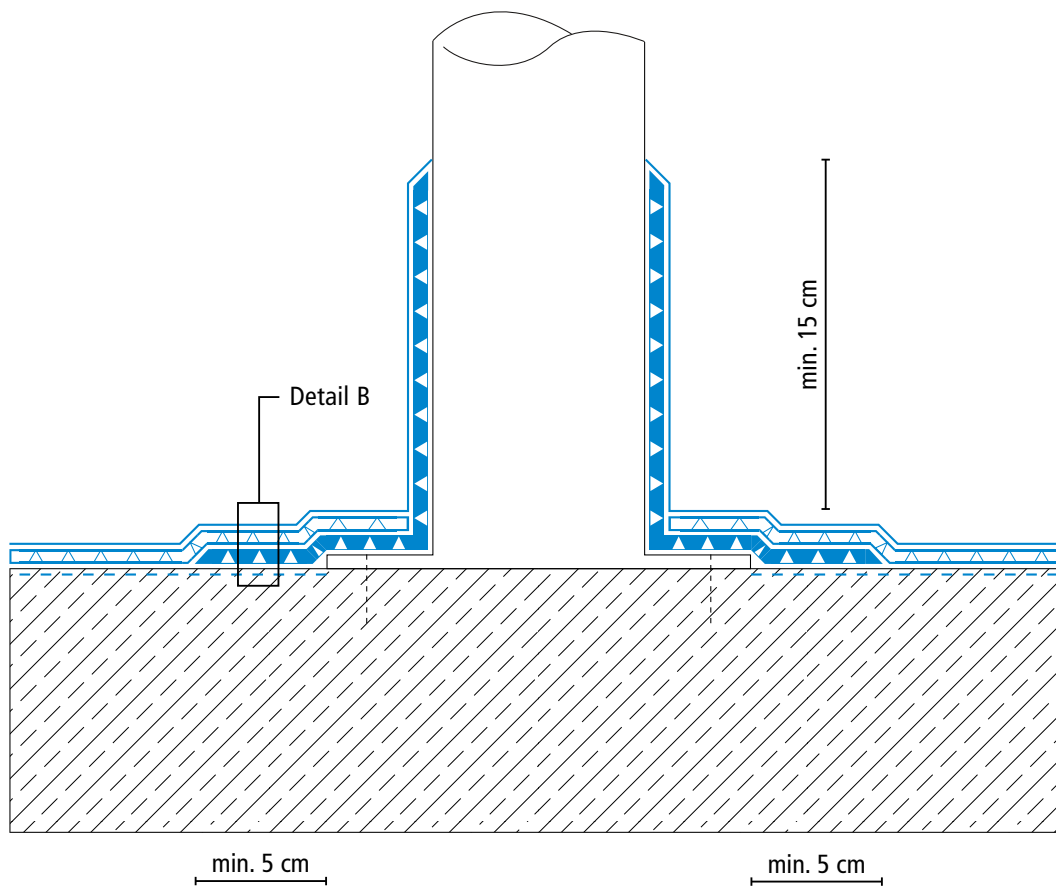
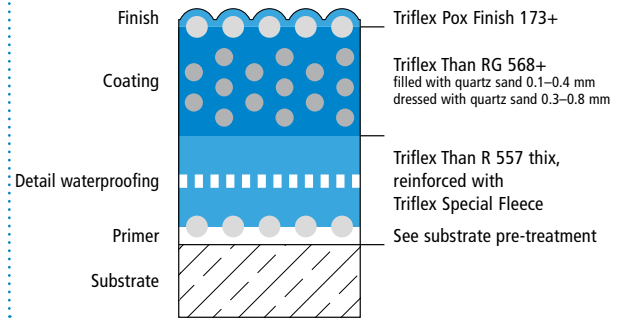
Triflex CPS-I+



System drawings

Settlement joint

System design – Detail B



Drawing no.: CPS-I+-1803

Height differences between fleece overlaps are exaggerated

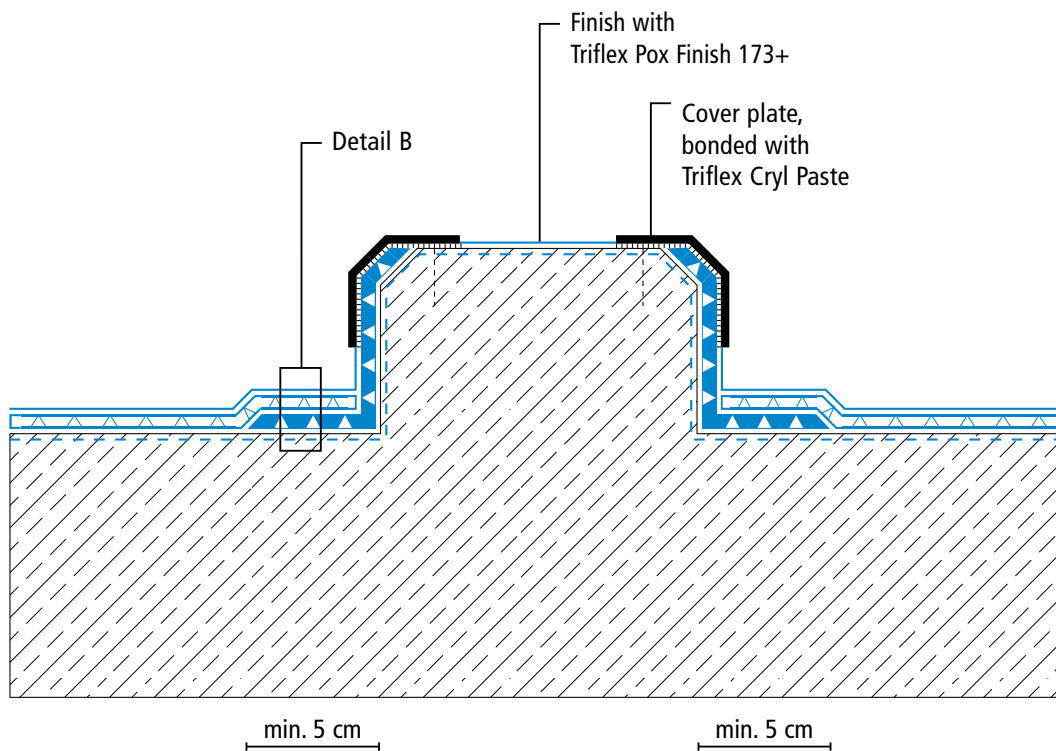
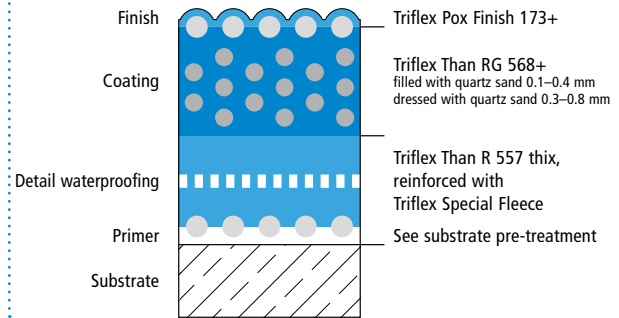
Triflex CPS-I+



System drawings

Kerb

System design – Detail B



Interior deck coating system (OS 11b)

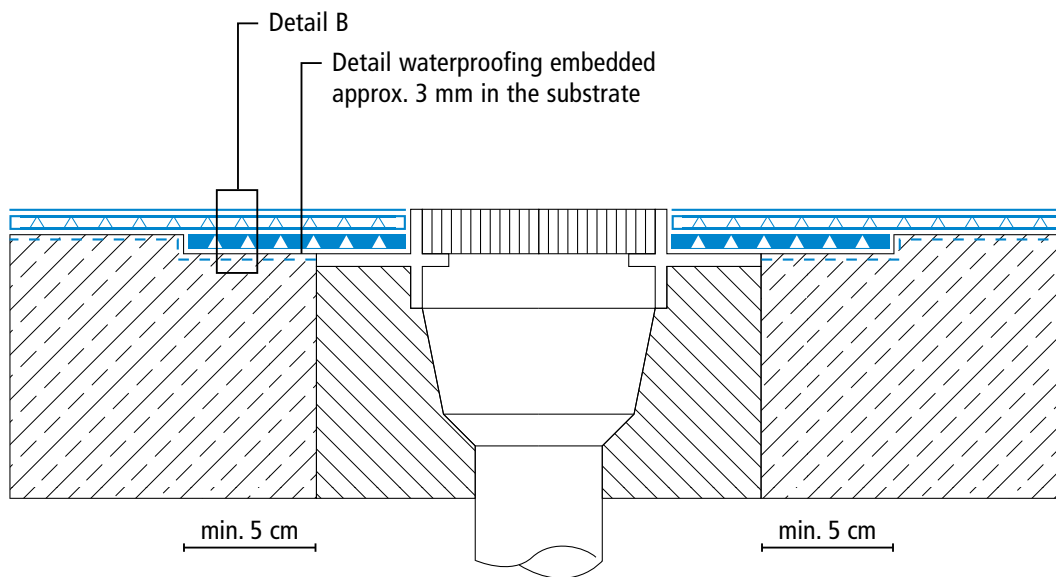
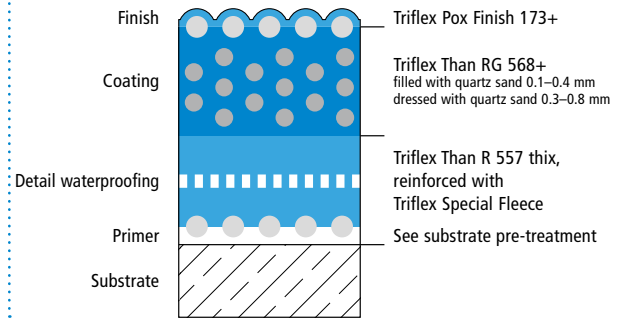
Triflex CPS-I+



System drawings

Gully / Gutter

System design – Detail B



Drawing no.: CPS-I+-1805

Height differences between fleece overlaps are exaggerated

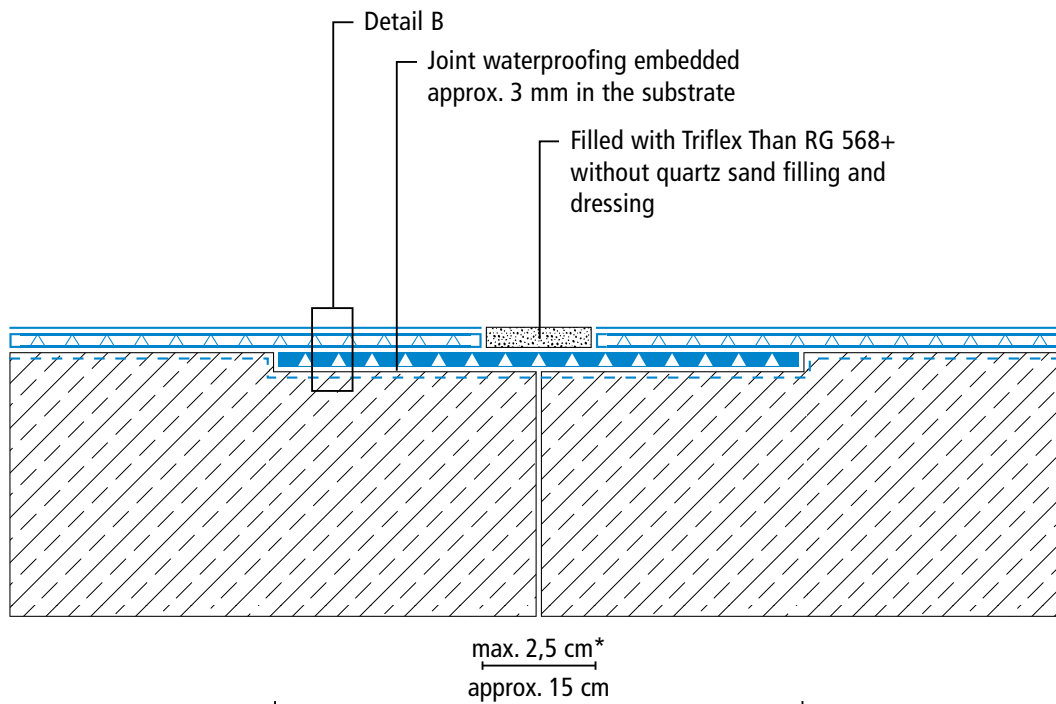
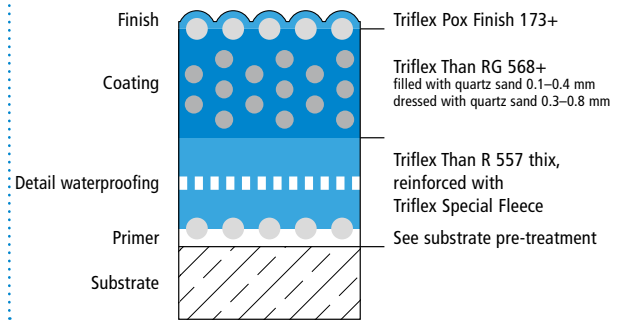
Triflex CPS-I+



System drawings

Construction joint

System design – Detail B



Drawing no.: CPS-I+-1806

* Omission of coating and finish (see system description)

Height differences between fleece overlaps are exaggerated

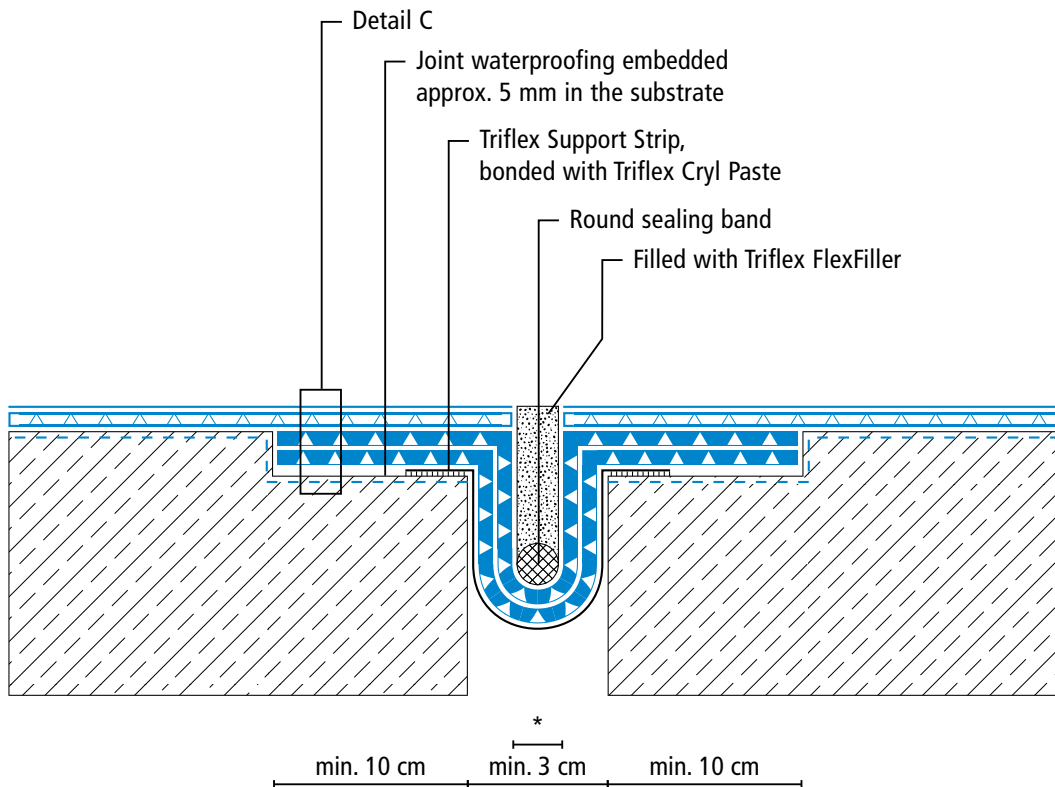
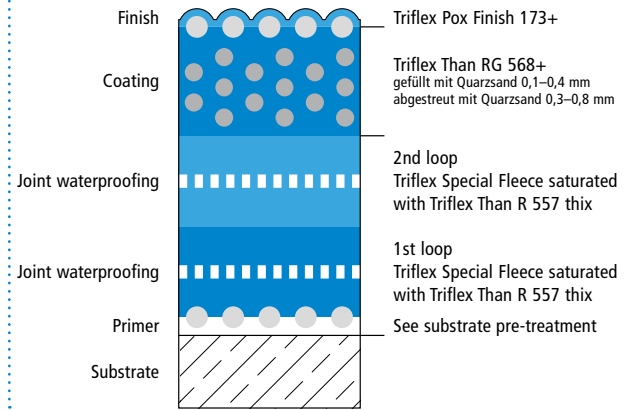
Triflex CPS-I+



System drawings

Settlement joint surface

System design – Detail C



Drawing no.: CPS-I+-1807

* Omission of coating and finish (see system description)

Height differences between fleece overlaps are exaggerated

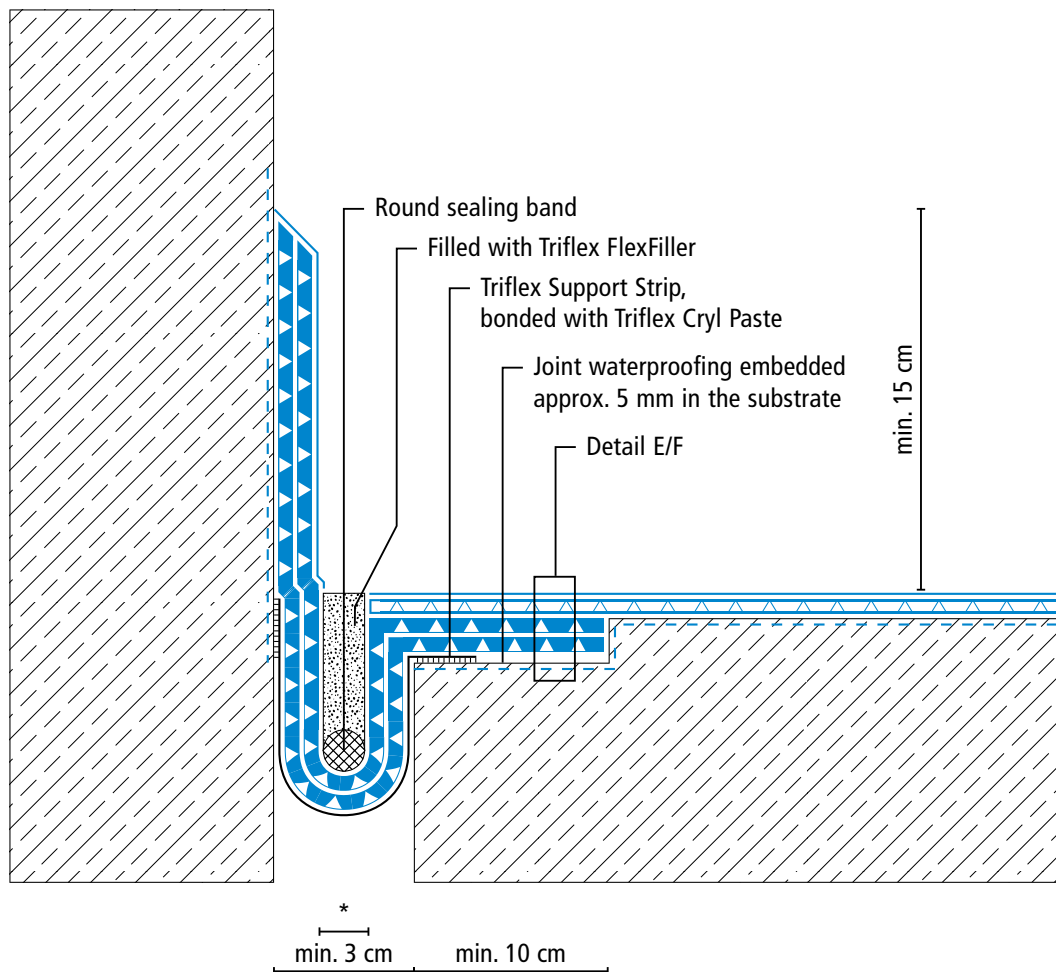
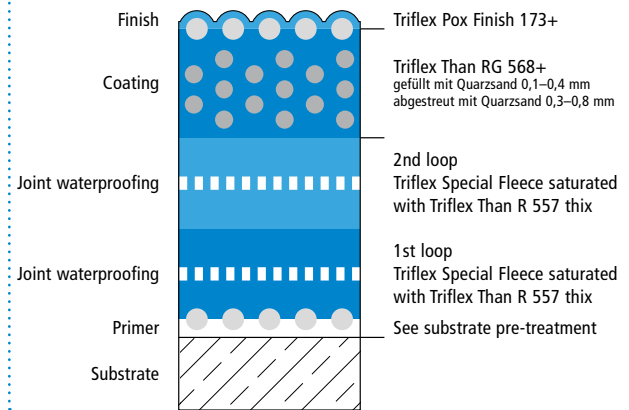
Triflex CPS-I+



System drawings

Settlement joint – wall junction

System design – Detail C



Drawing no.: CPS-I+-1808

* Omission of coating and finish (see system description)

Height differences between fleece overlaps are exaggerated