

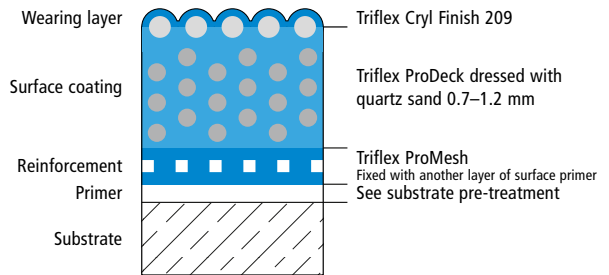
# Triflex ProDeck



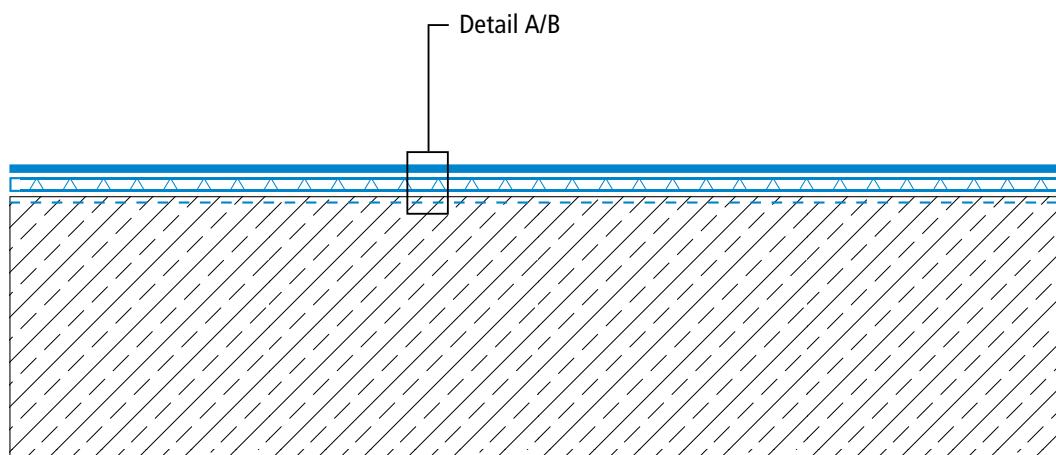
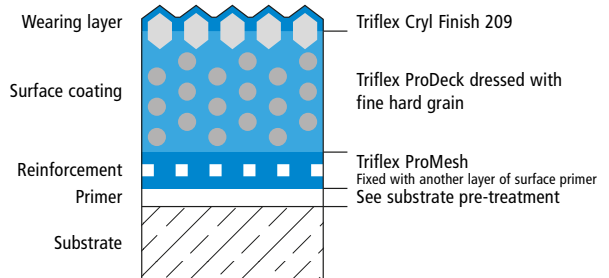
## System drawings

Area

### System set-up – Detail A



### System set-up – Detail B

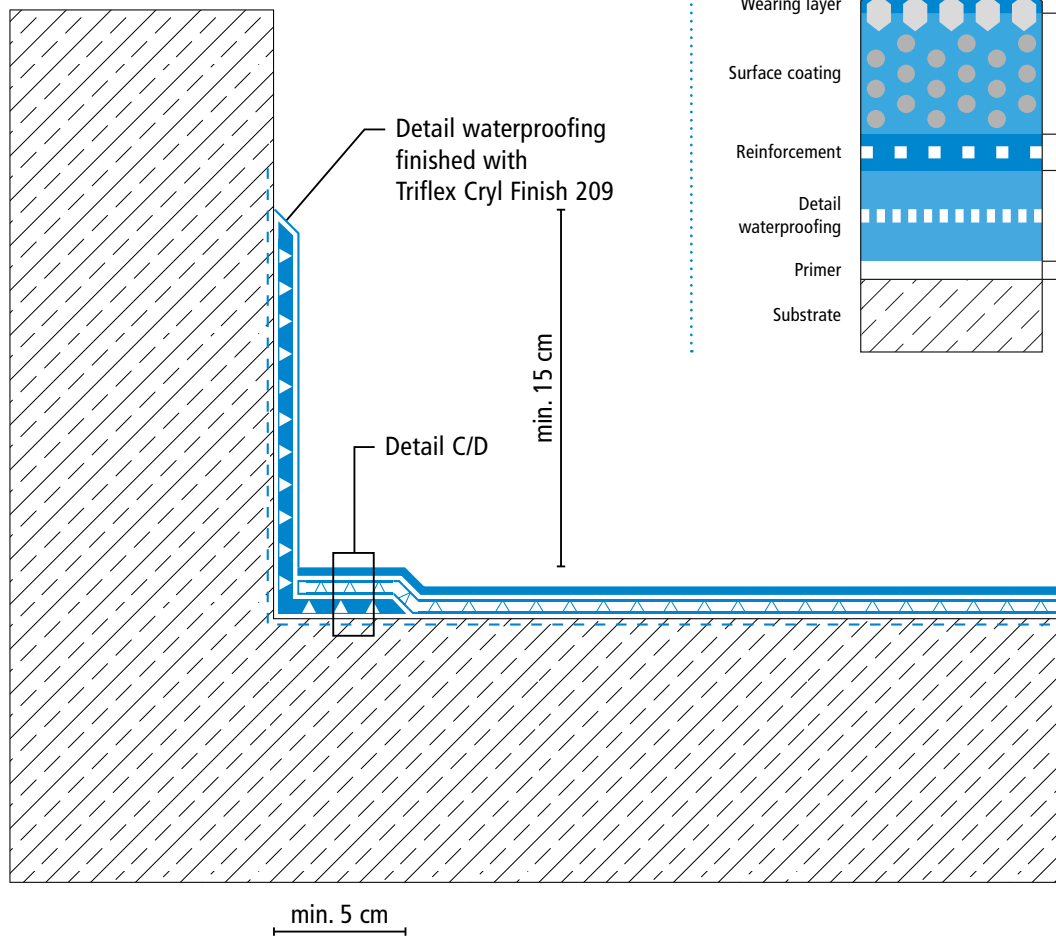


# Triflex ProDeck

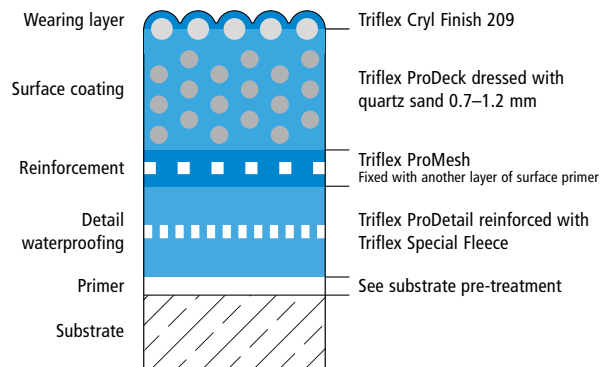


## System drawings

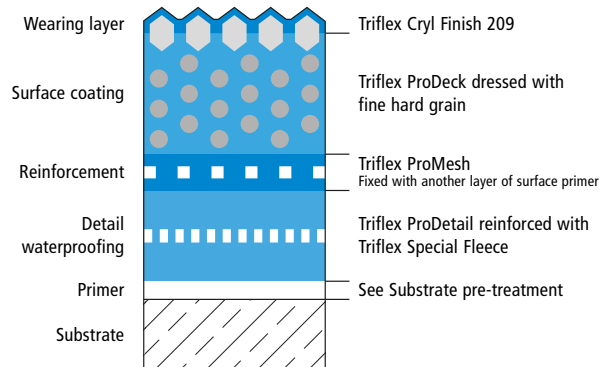
### Wall junction



### System set-up – Detail C



### System set-up – Detail D



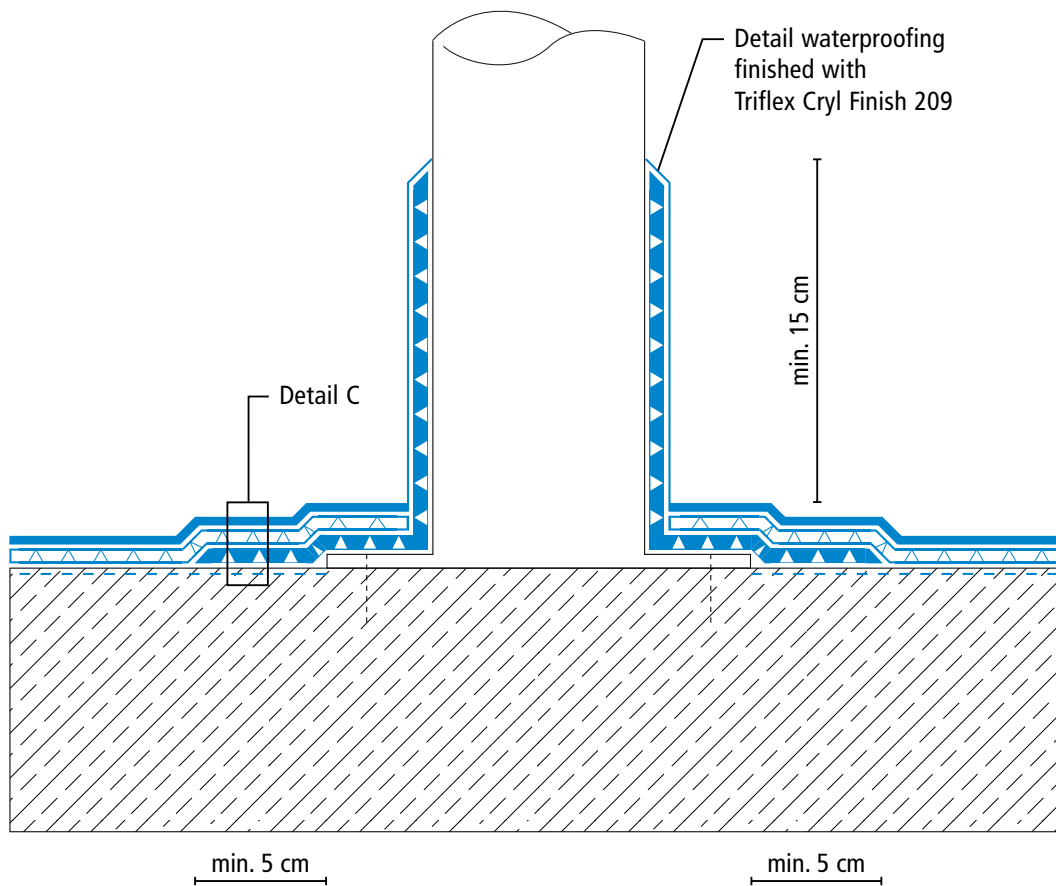
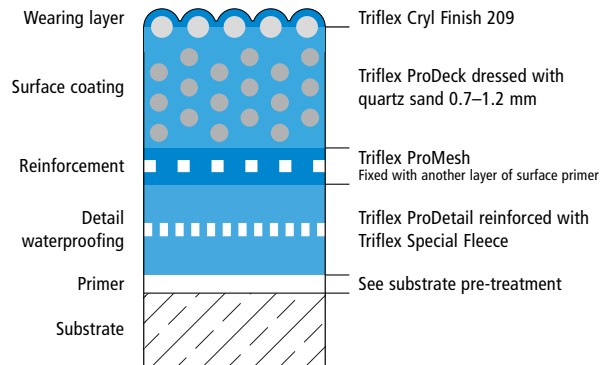
# Triflex ProDeck



## System drawings

### Prop connector/penetration

#### System set-up – Detail C



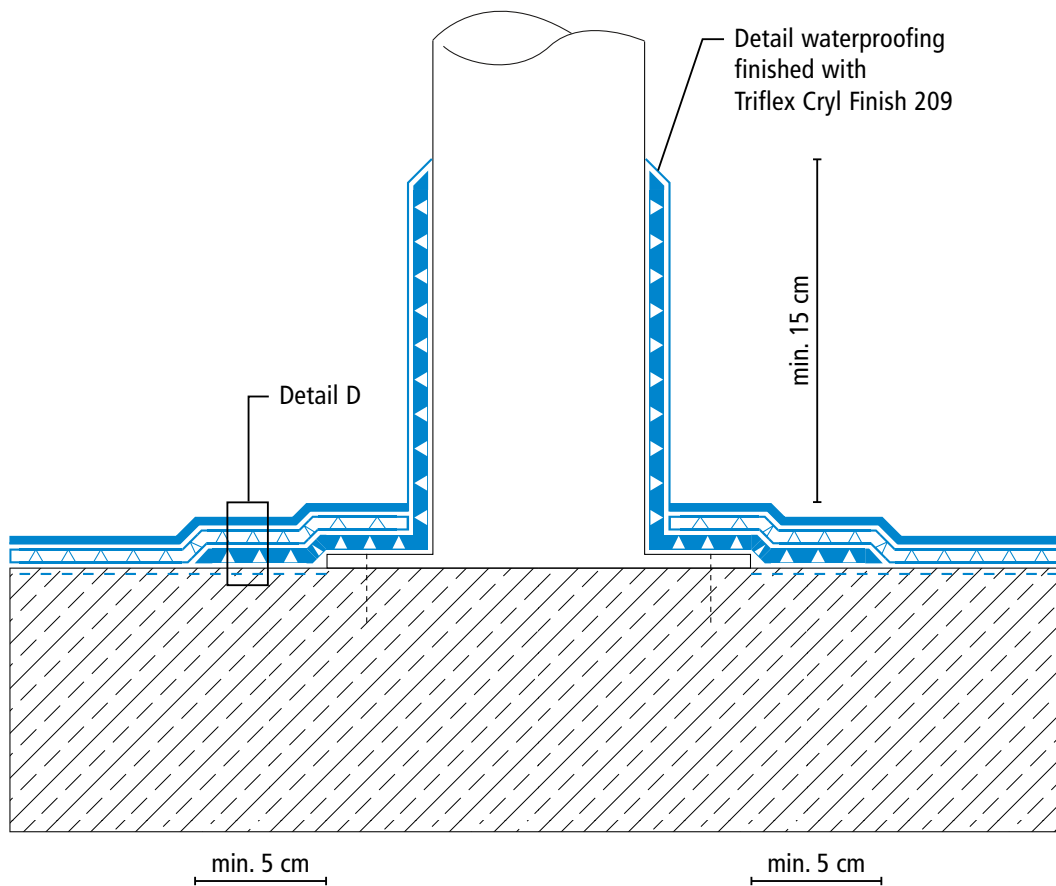
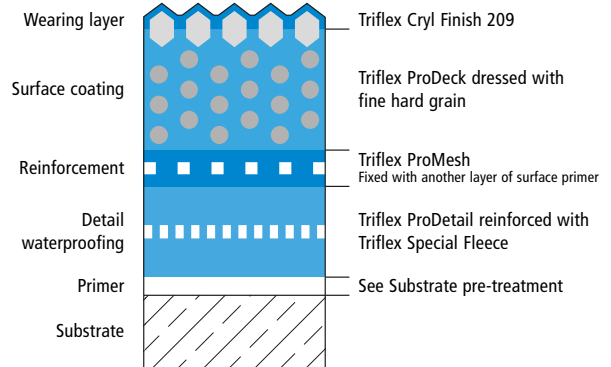
# Triflex ProDeck



## System drawings

### Prop connector/penetration

#### System set-up – Detail D



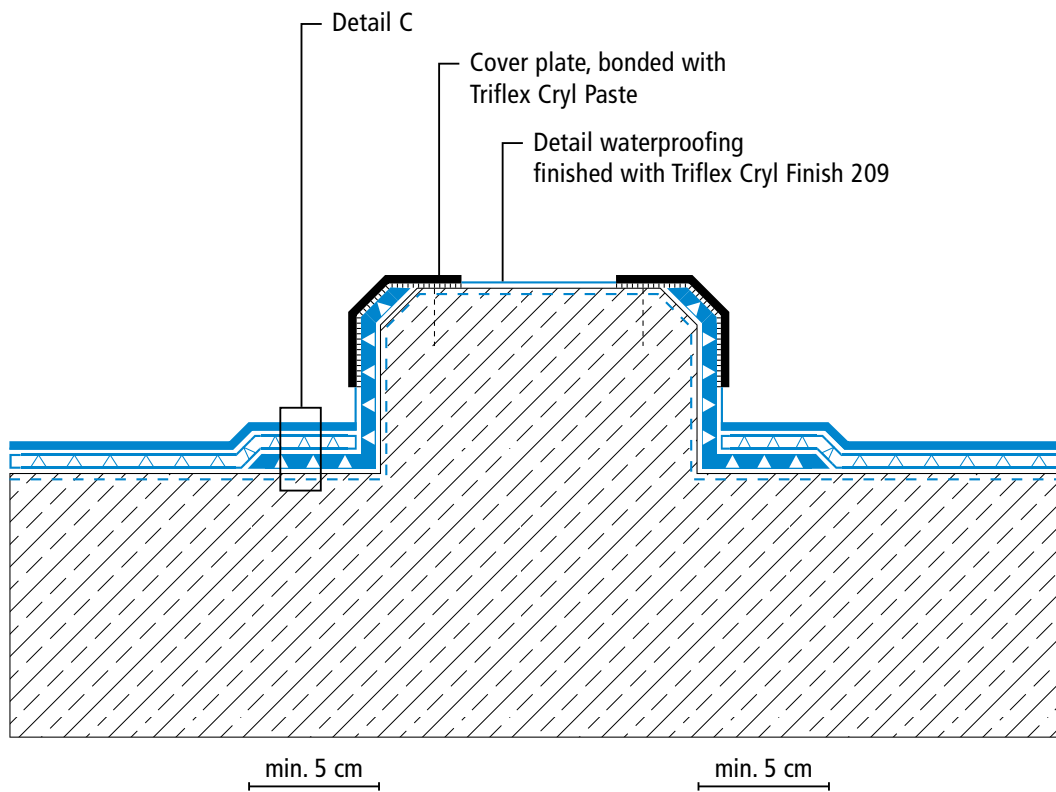
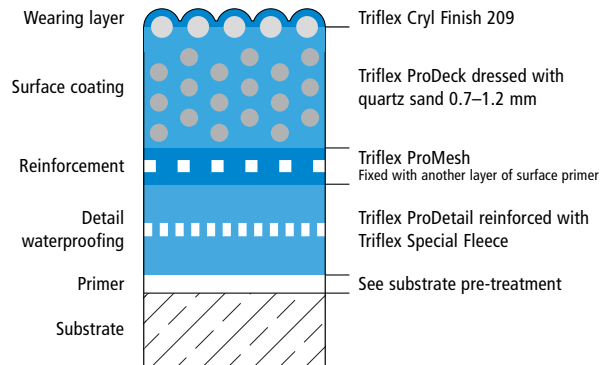
# Triflex ProDeck



## System drawings

Kerb

System set-up – Detail C



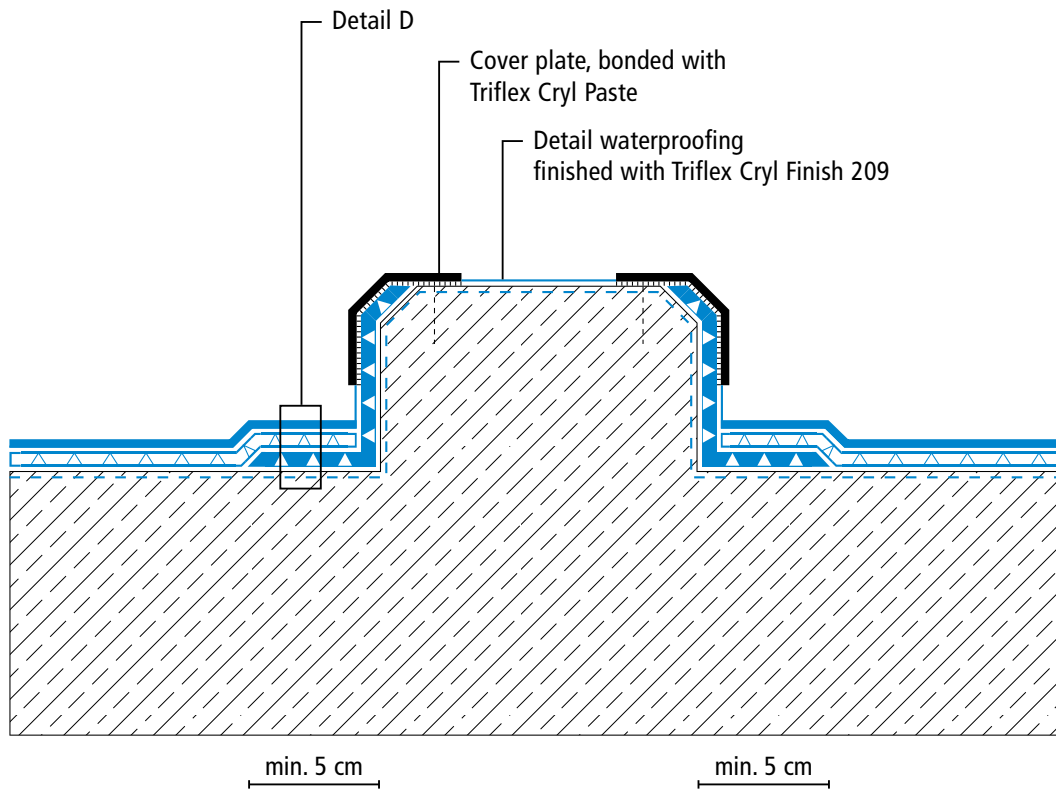
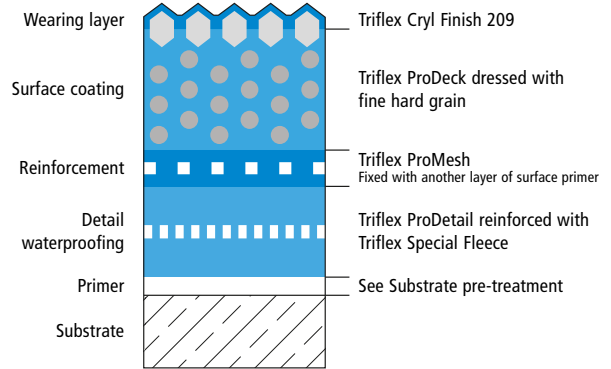
# Triflex ProDeck



## System drawings

Kerb

System set-up – Detail D



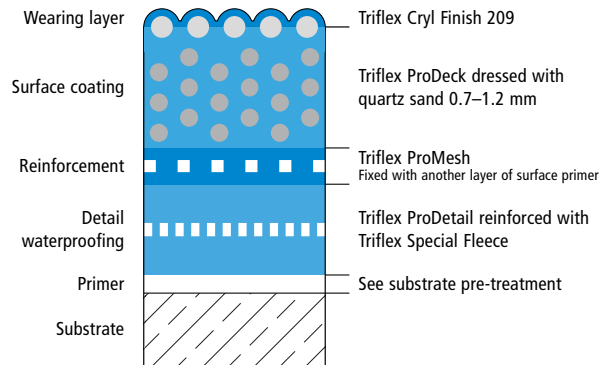
# Triflex ProDeck



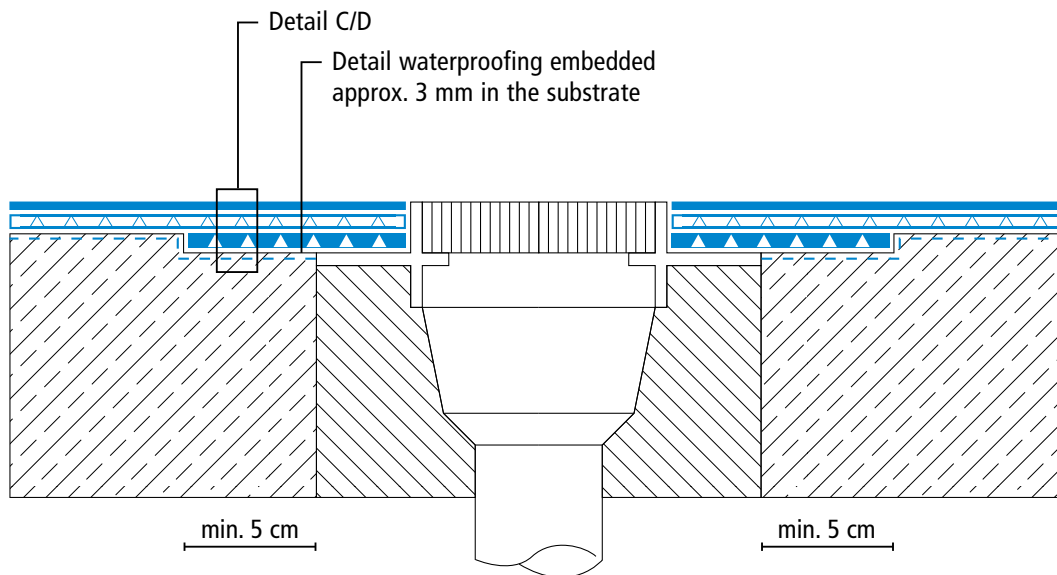
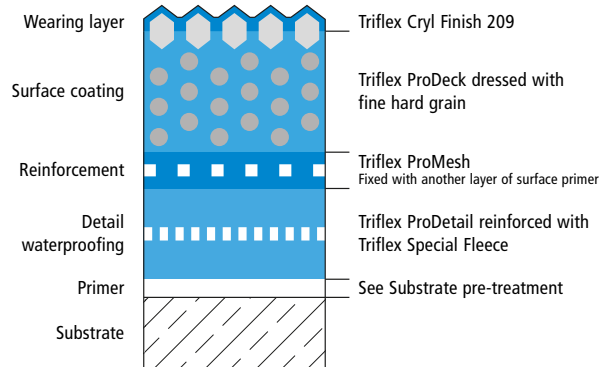
## System drawings

### Gully/Gutter

#### System set-up – Detail C



#### System set-up – Detail D



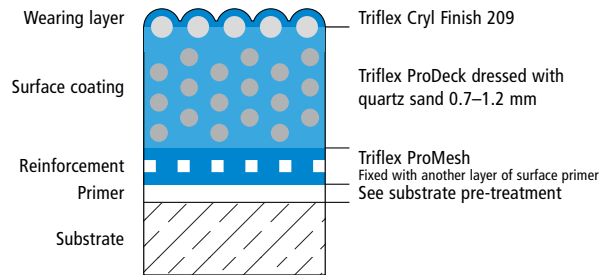
# Triflex ProDeck



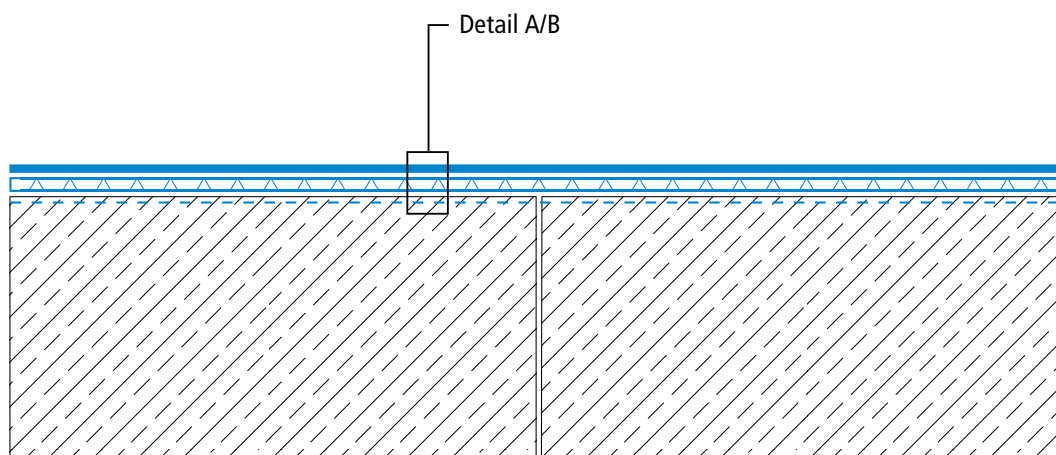
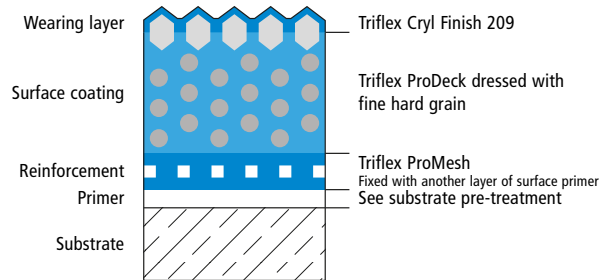
## System drawings

### Construction joint

#### System set-up – Detail A



#### System set-up – Detail B





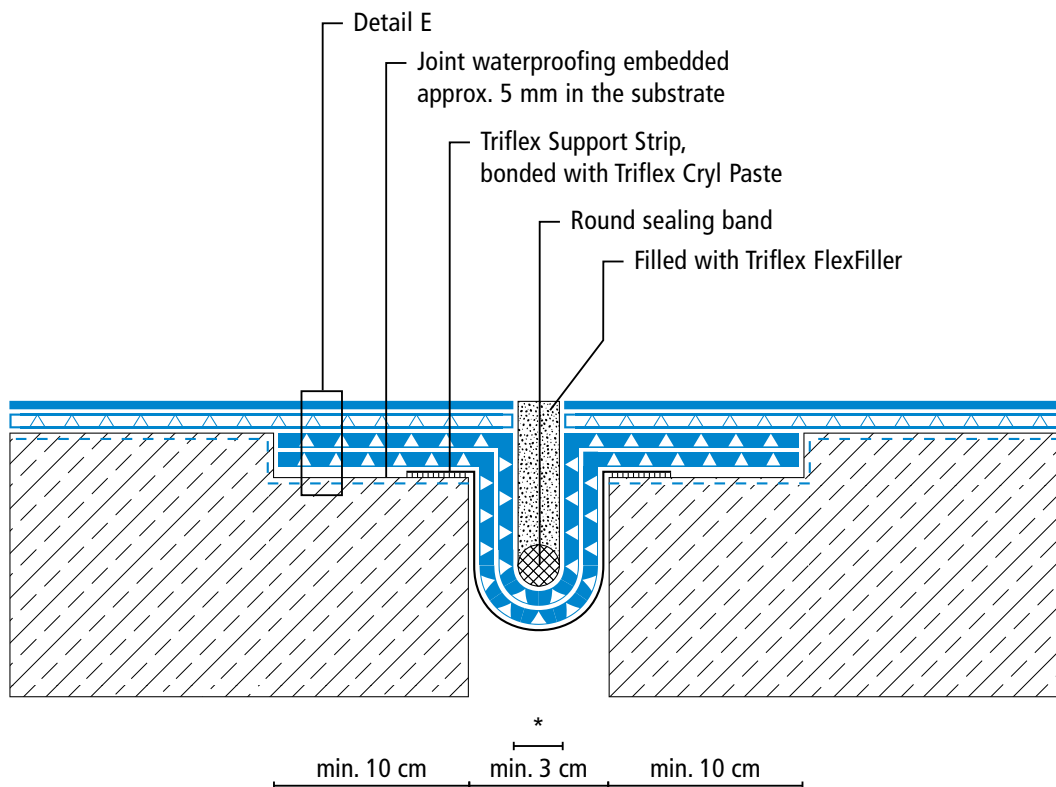
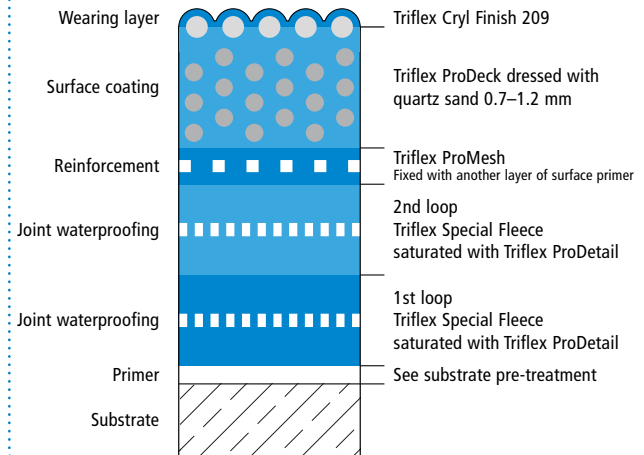
# Triflex ProDeck



## System drawings

### Settlement joint surface

### System set-up – Detail E



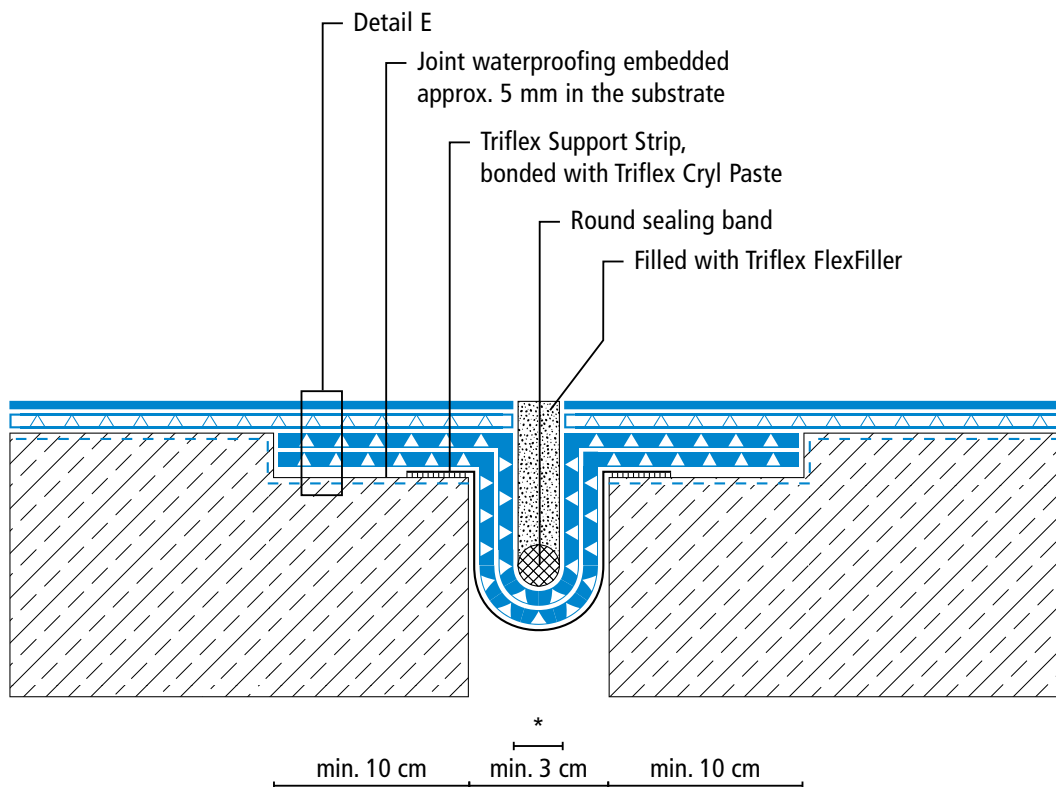
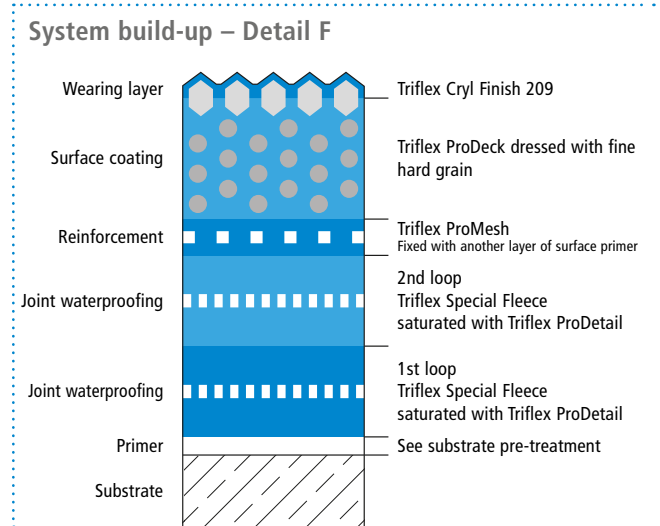
\* Omission of surface coating and wearing layer (see system description)  
Height differences between fleece overlaps are exaggerated.

# Triflex ProDeck



## System drawings

### Settlement joint surface



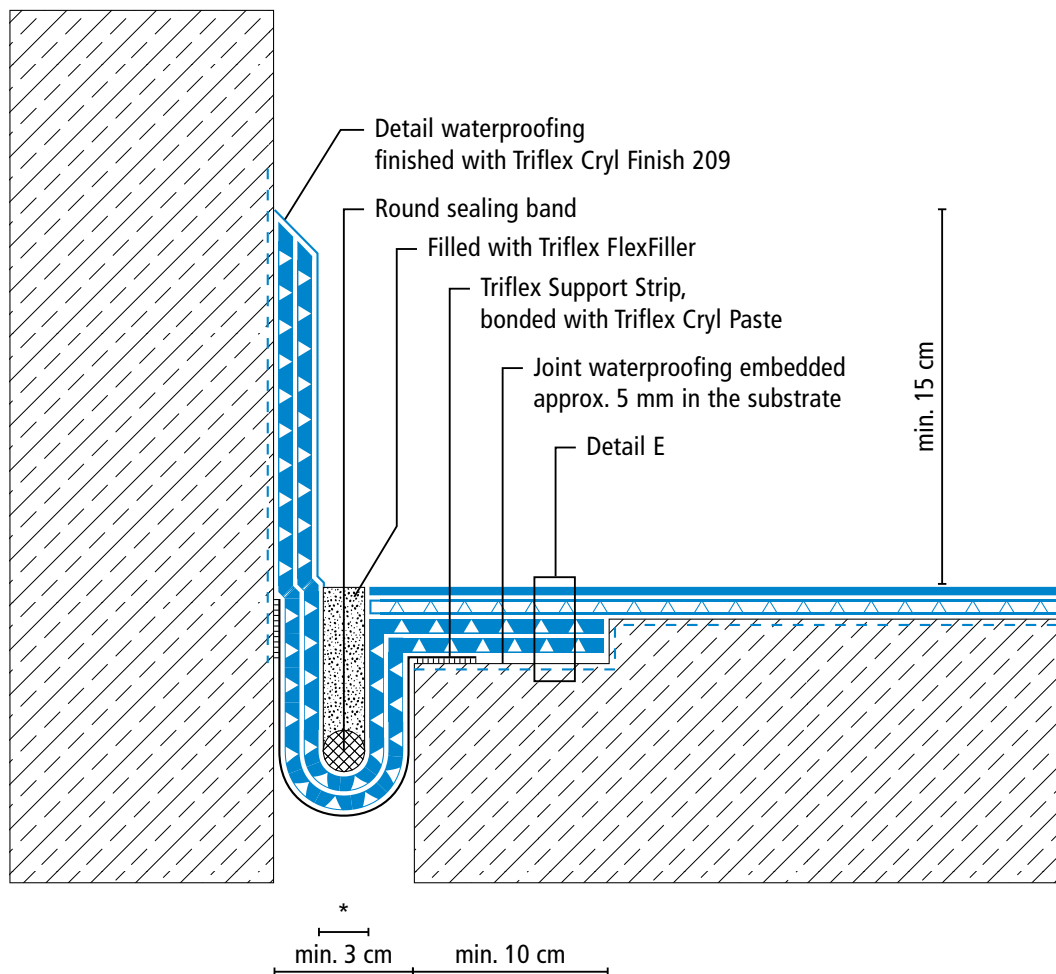
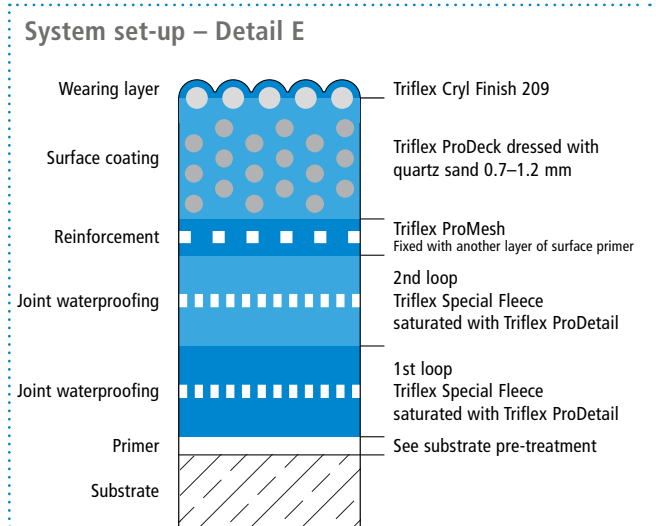
\* Omission of surface coating and wearing layer (see system description)  
Height differences between fleece overlaps are exaggerated.

# Triflex ProDeck



## System drawings

### Settlement joint – wall junction



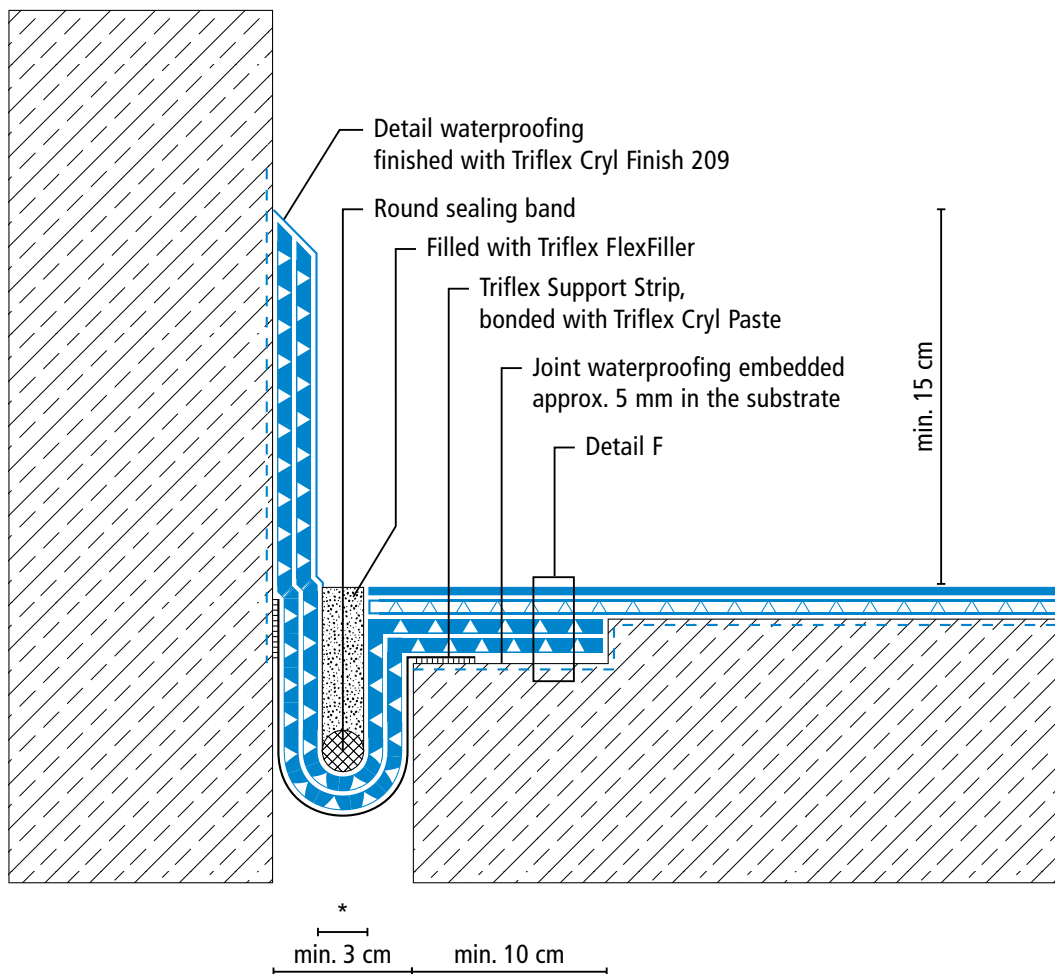
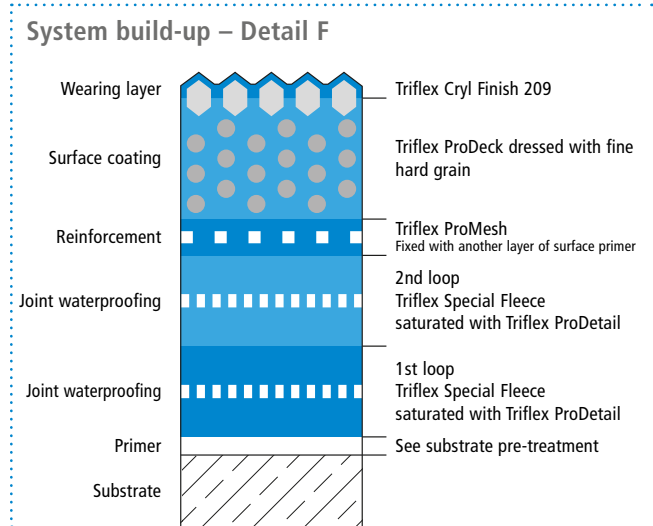
\* Omission of surface coating and wearing layer (see system description)  
Height differences between fleece overlaps are exaggerated.

# Triflex ProDeck



## System drawings

### Settlement joint – wall junction



\* Omission of surface coating and wearing layer (see system description)  
Height differences between fleece overlaps are exaggerated.