

Waterproofing system under mastic asphalt (OS 10)

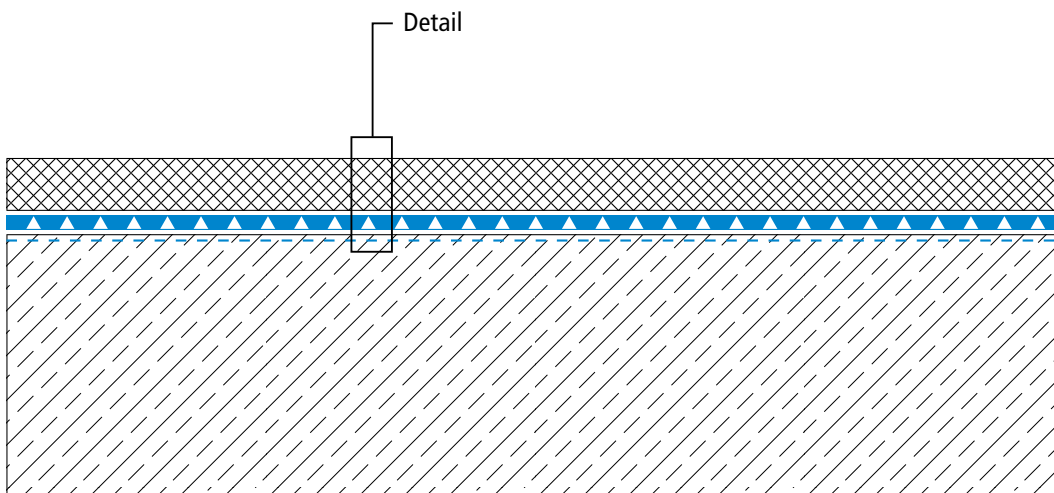
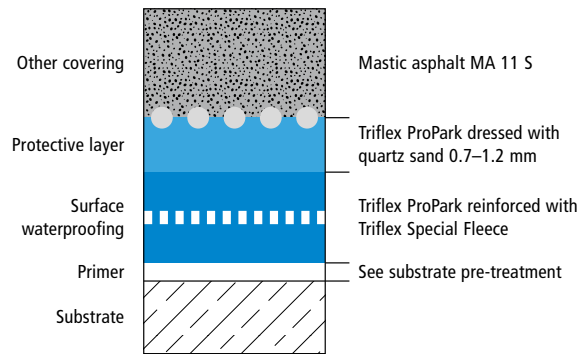
Triflex AWS



System drawings

Area

System set-up – Detail



Waterproofing system under mastic asphalt (OS 10)

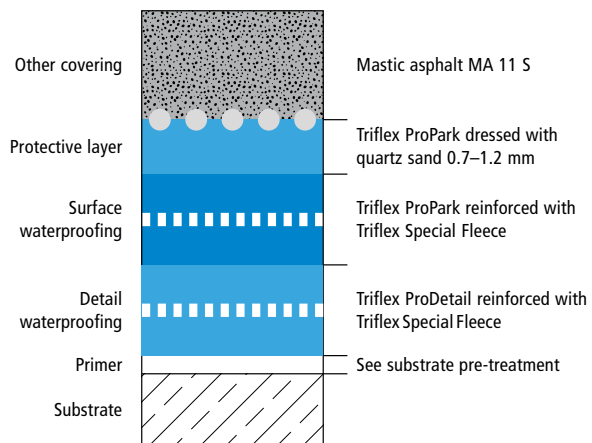
Triflex AWS



System drawings

Wall junction

System set-up – Detail



Waterproofing system under mastic asphalt (OS 10)

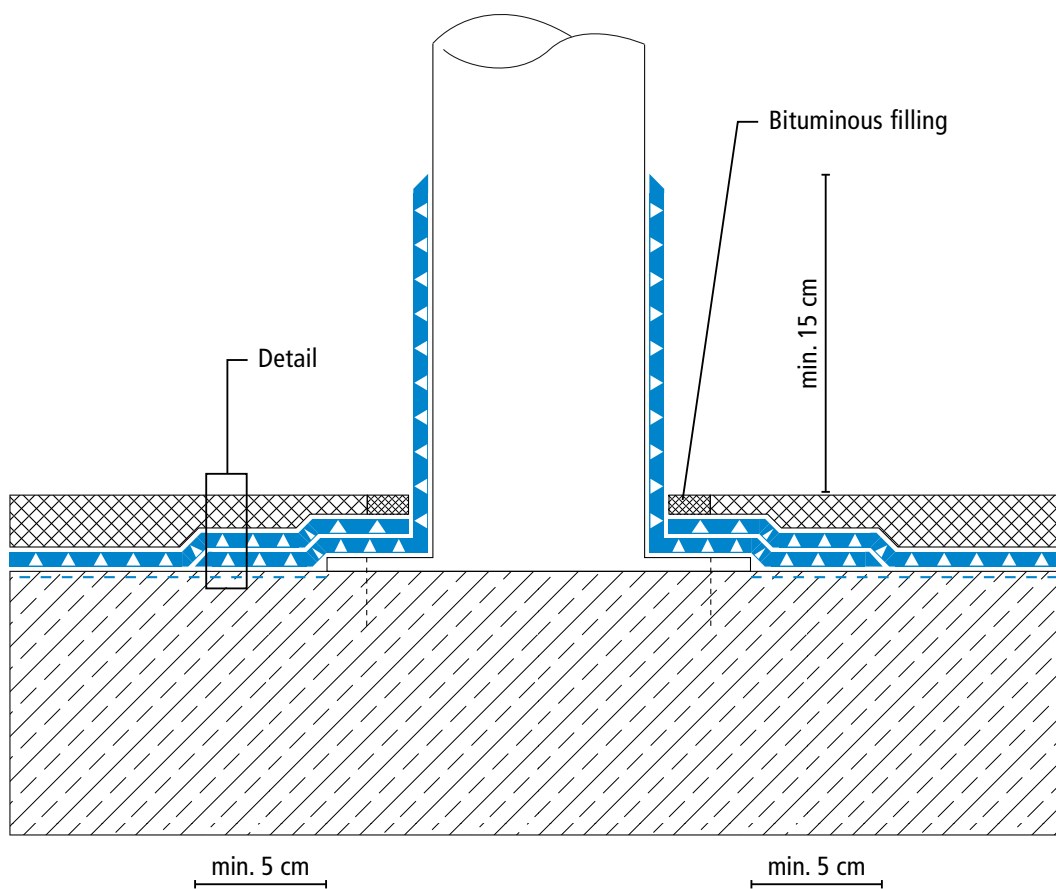
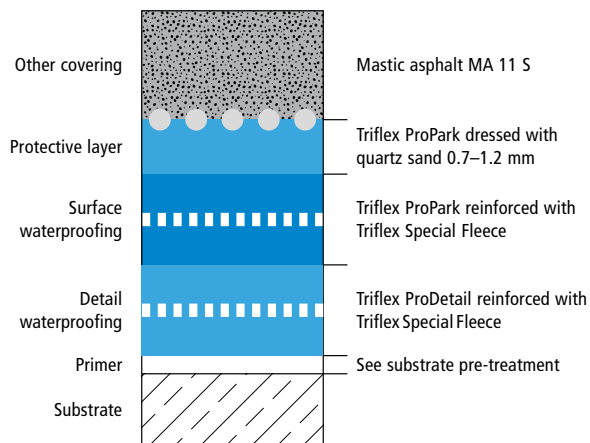
Triflex AWS



System drawings

Prop connector/penetration

System set-up – Detail



Waterproofing system under mastic asphalt (OS 10)

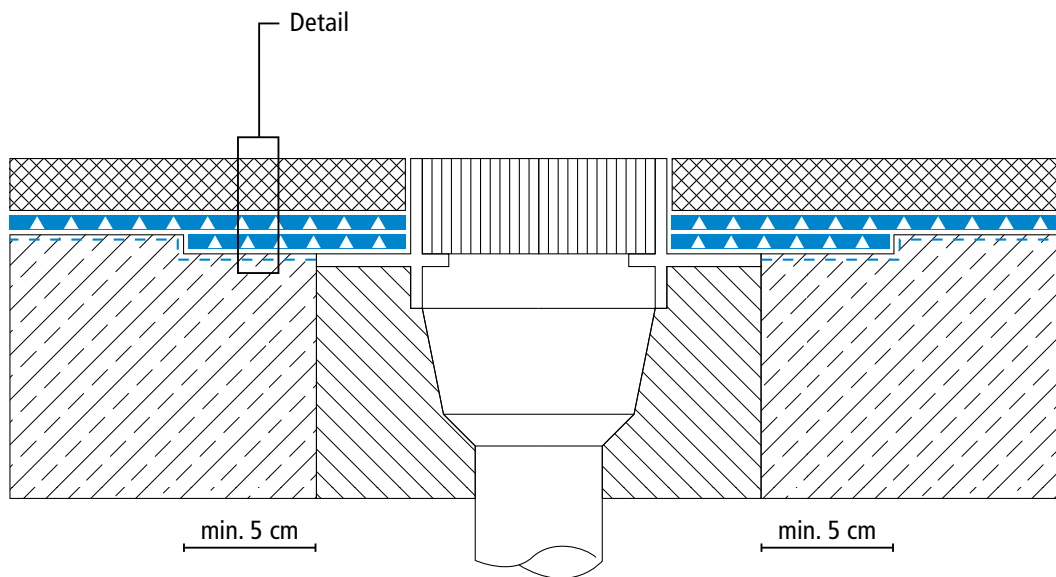
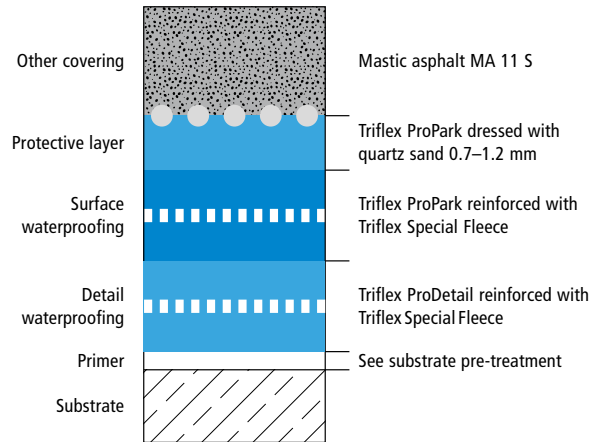
Triflex AWS



System drawings

Gully/Gutter

System set-up – Detail



Waterproofing system under mastic asphalt (OS 10)

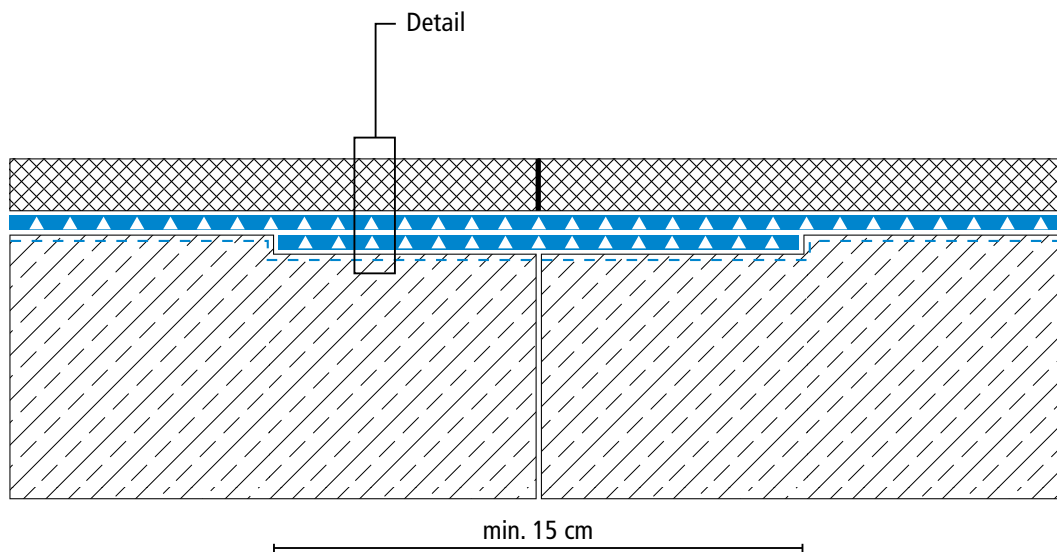
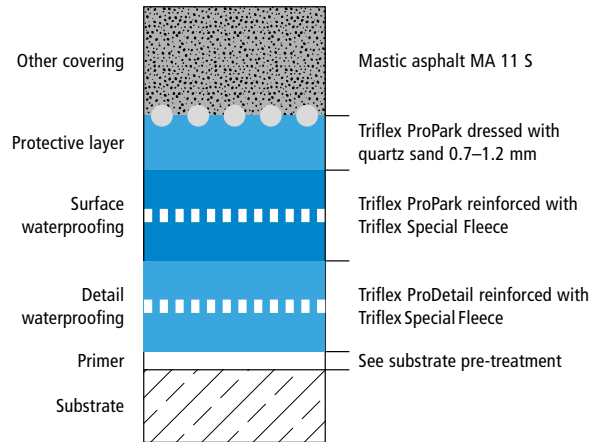
Triflex AWS



System drawings

Construction joint

System set-up – Detail



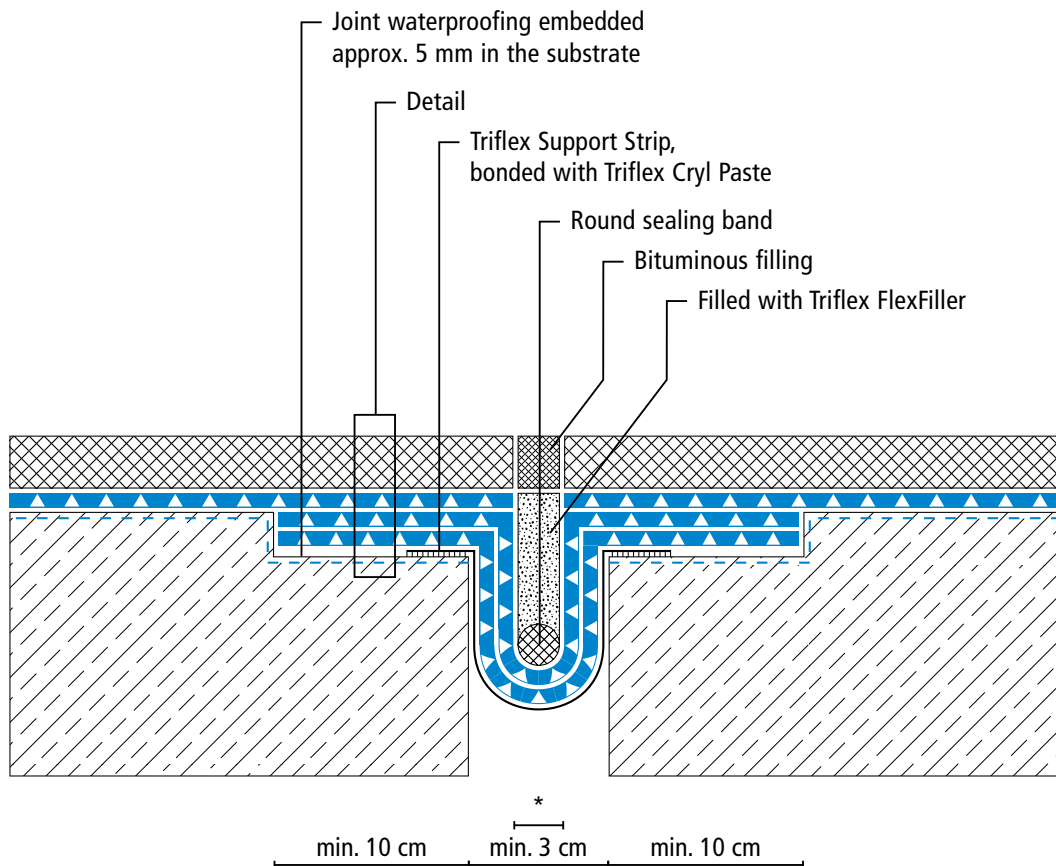
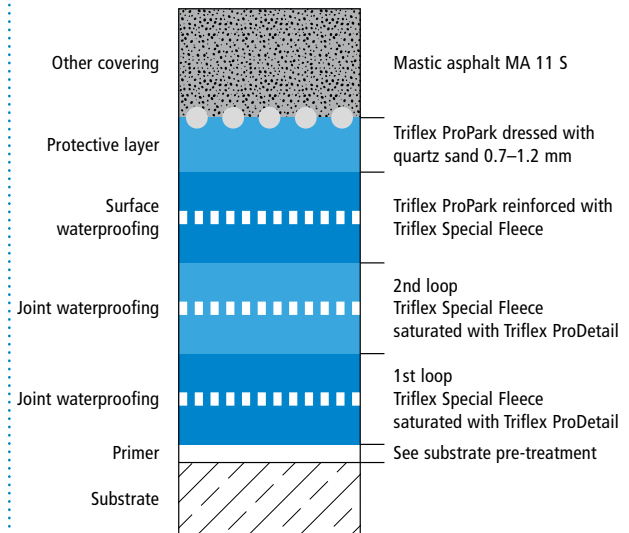
Triflex AWS



System drawings

Settlement joint surface

System set-up – Detail



* Omission of surface waterproofing and protective layer (see system description)
Height differences between fleece overlaps are exaggerated.

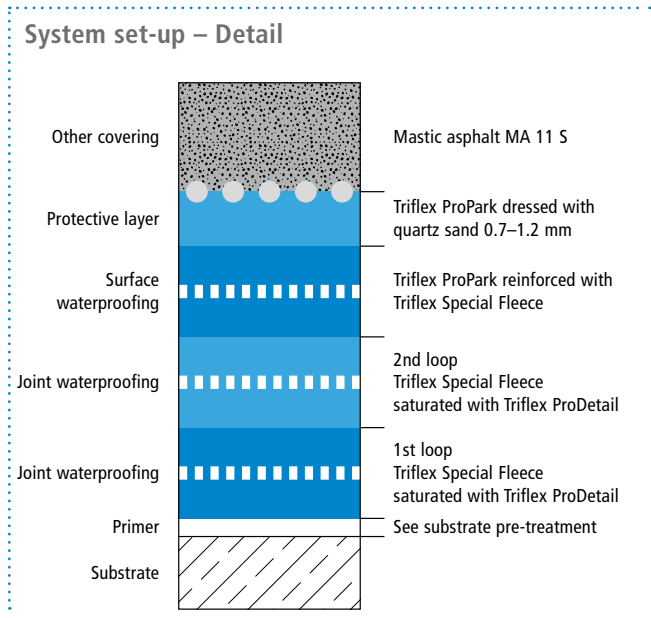
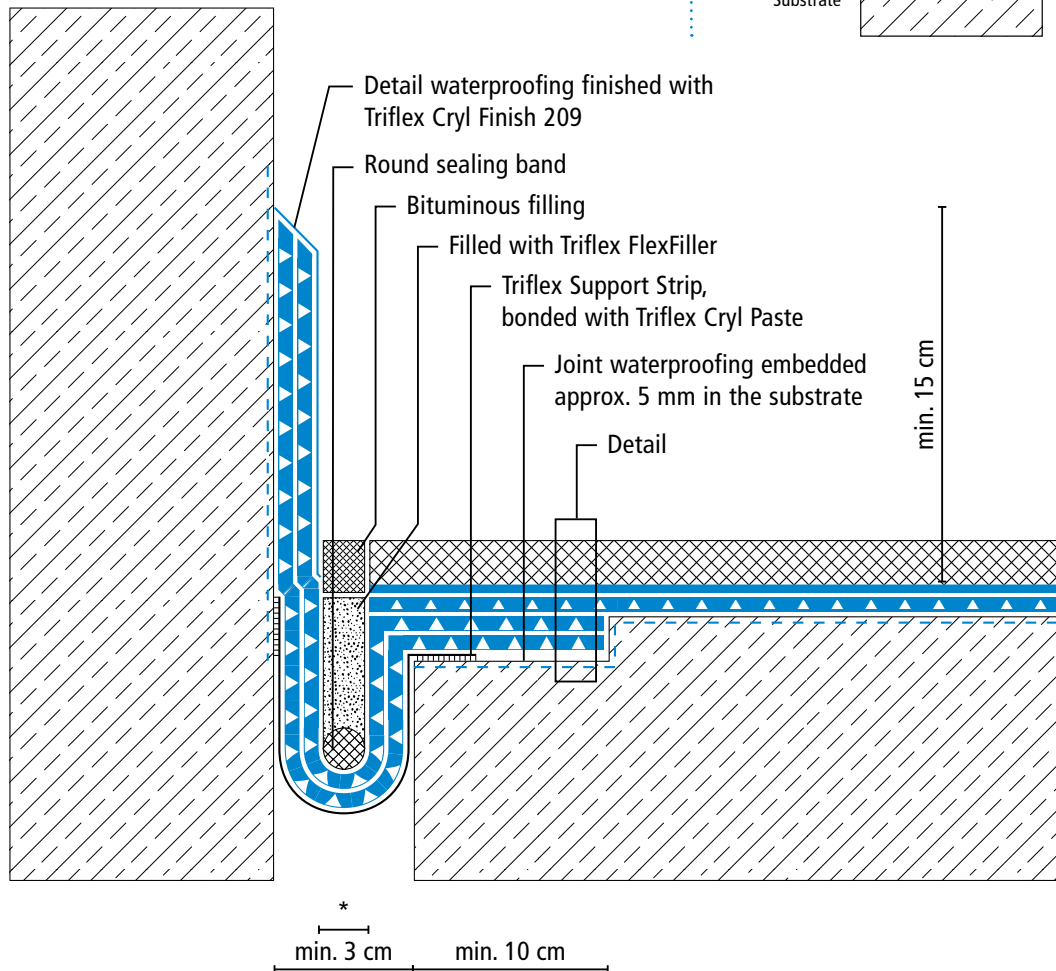
Triflex AWS



System drawings

Settlement joint – wall junction

System set-up – Detail



Waterproofing system under mastic asphalt (OS 10)

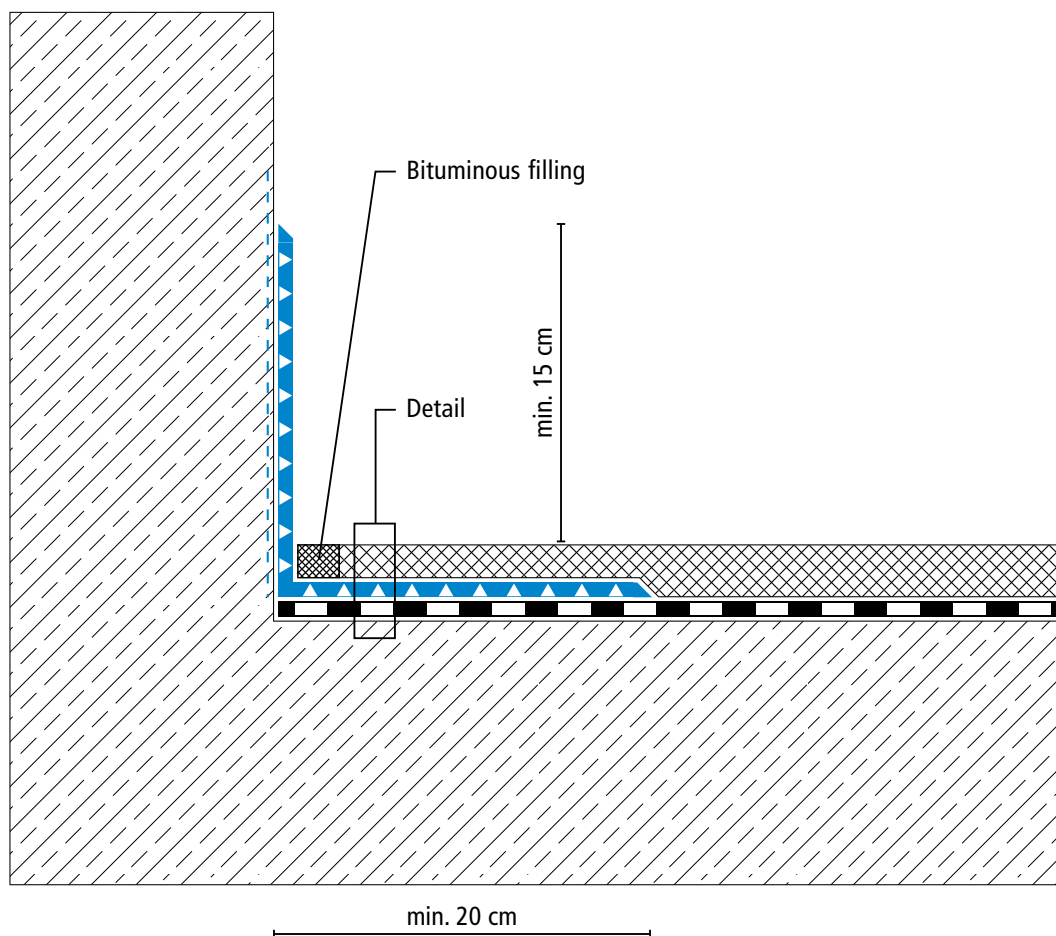
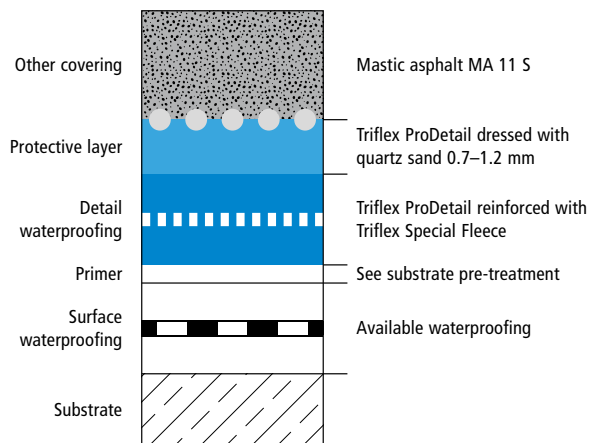
Triflex AWS



System drawings

Wall junction of available waterproofing

System set-up – Detail



Waterproofing system under mastic asphalt (OS 10)

Triflex AWS



System drawings

Prop connector of available waterproofing

System set-up – Detail

