

Balcony waterproofing system

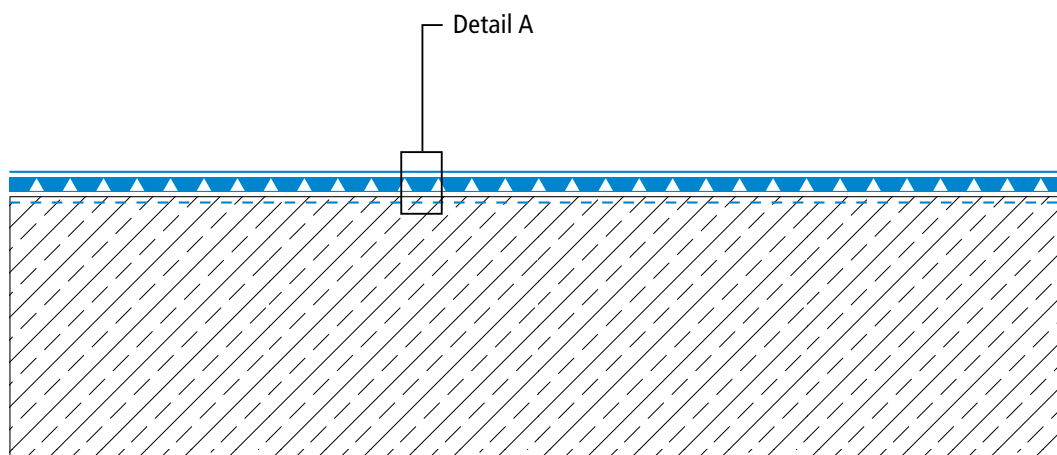
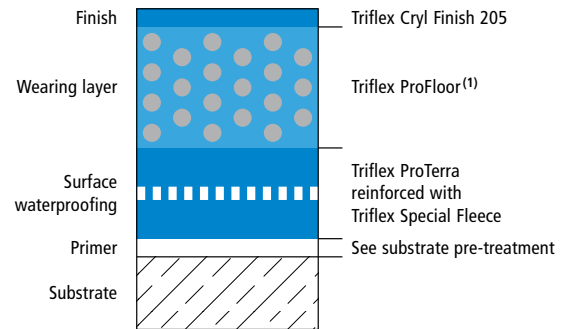
# Triflex BTS-P



## System drawings

Surface – standard

### System design – Detail A



Drawing no.: BTS-P-2701

Height differences between fleece overlaps are exaggerated

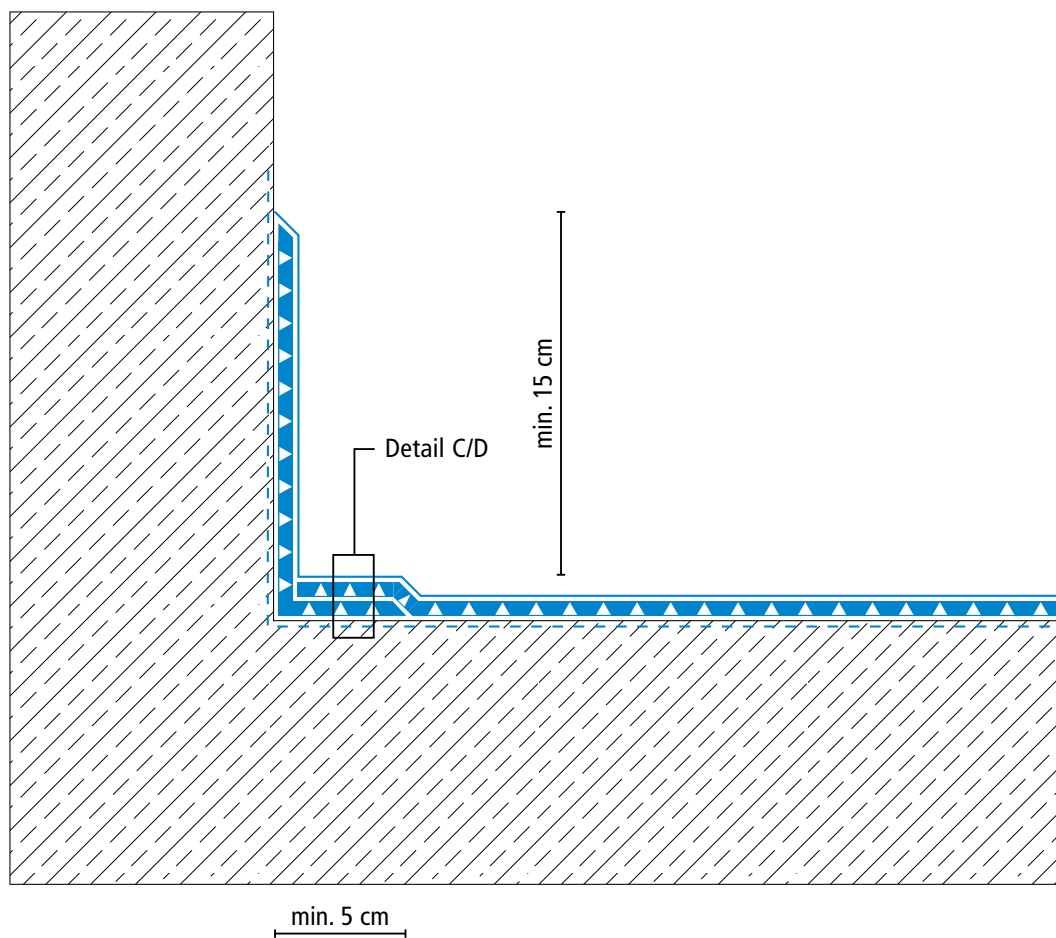
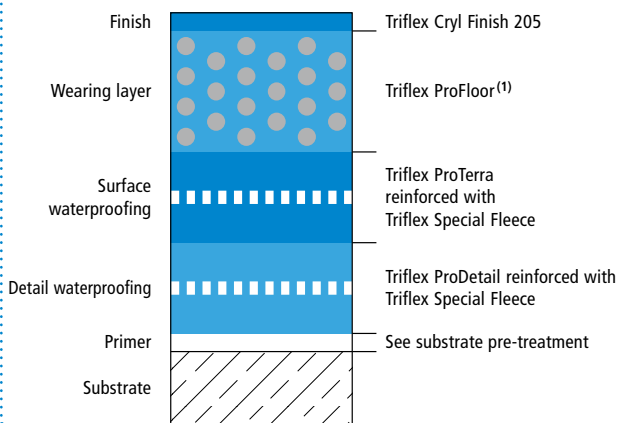
<sup>(1)</sup> Triflex ProFloor (3K) or Triflex ProFloor RS 2K



## System drawings

### Wall junction

#### System design – Detail C

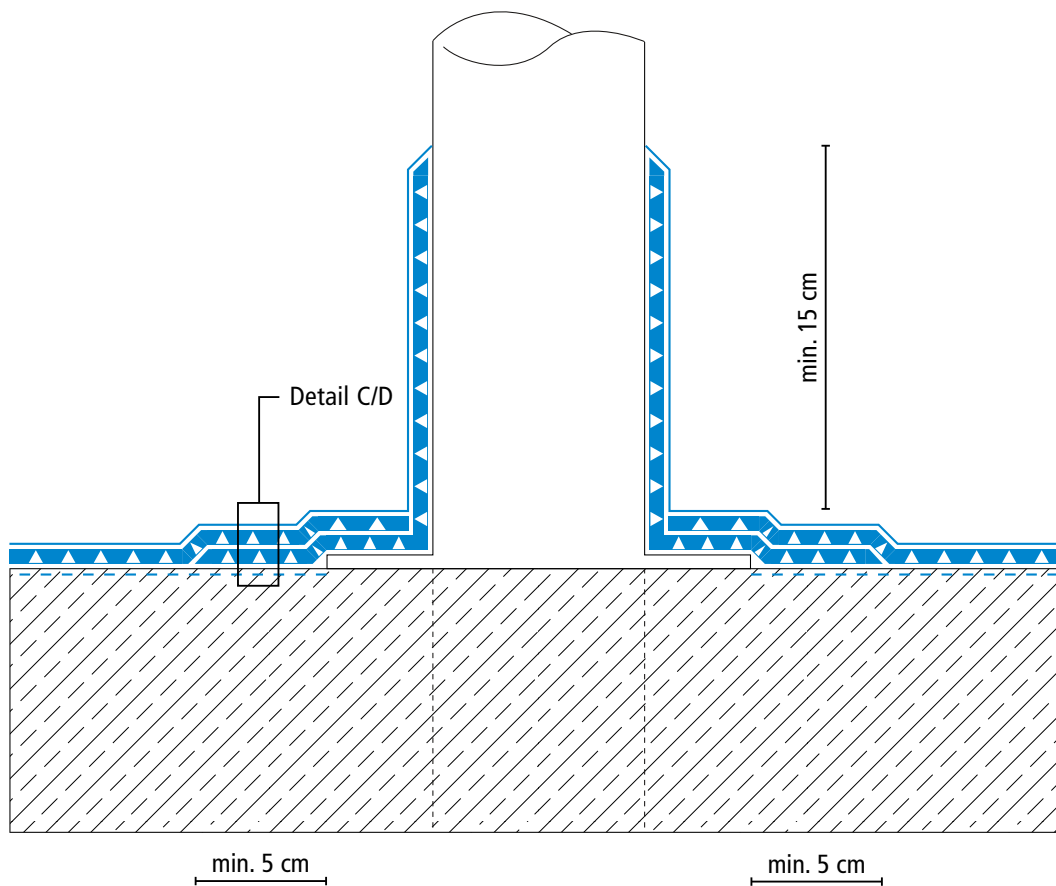
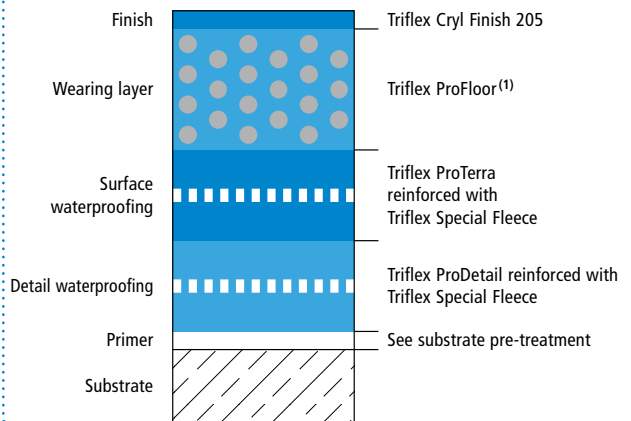




## System drawings

### Prop connector / penetration

#### System design – Detail C

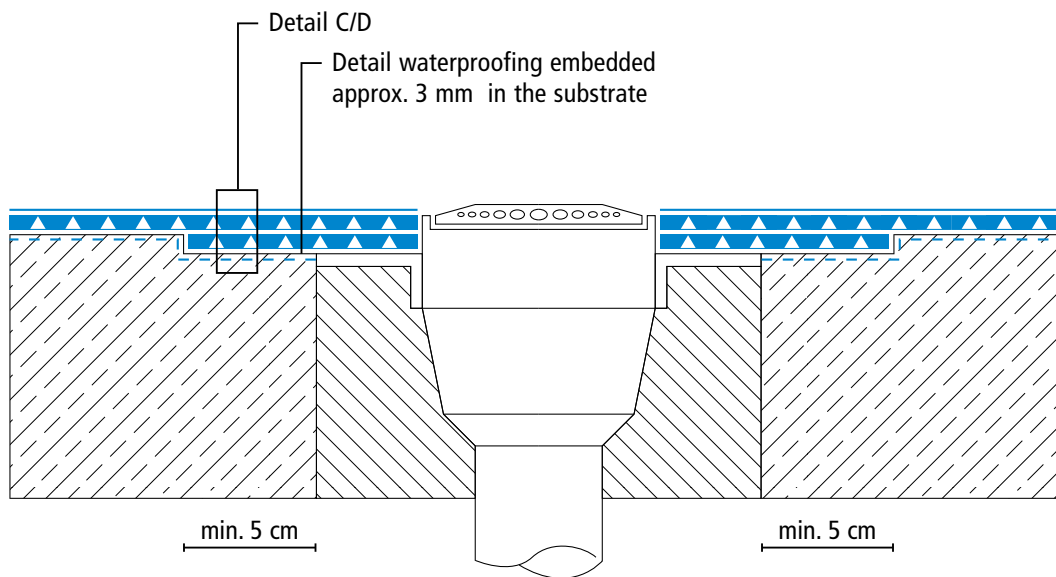
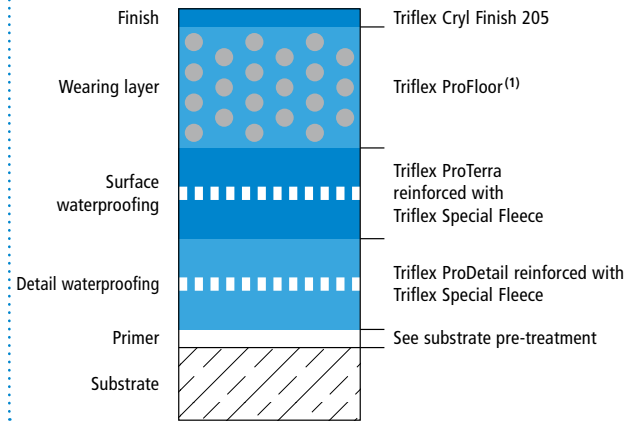




## System drawings

### Gully

#### System design – Detail C

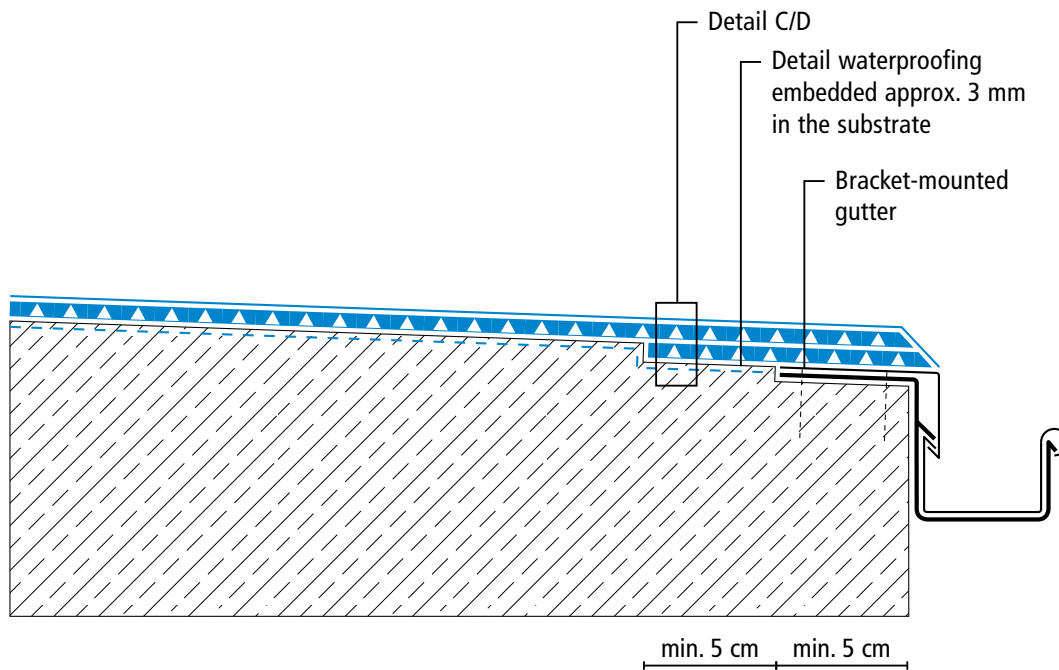
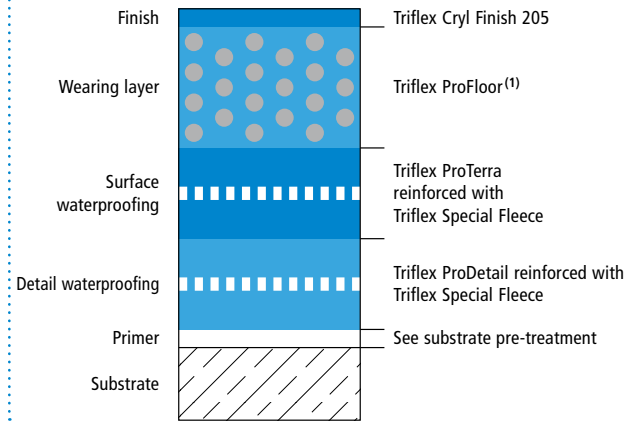




## System drawings

### Leading edge with bracket-mounted gutter

System design – Detail C

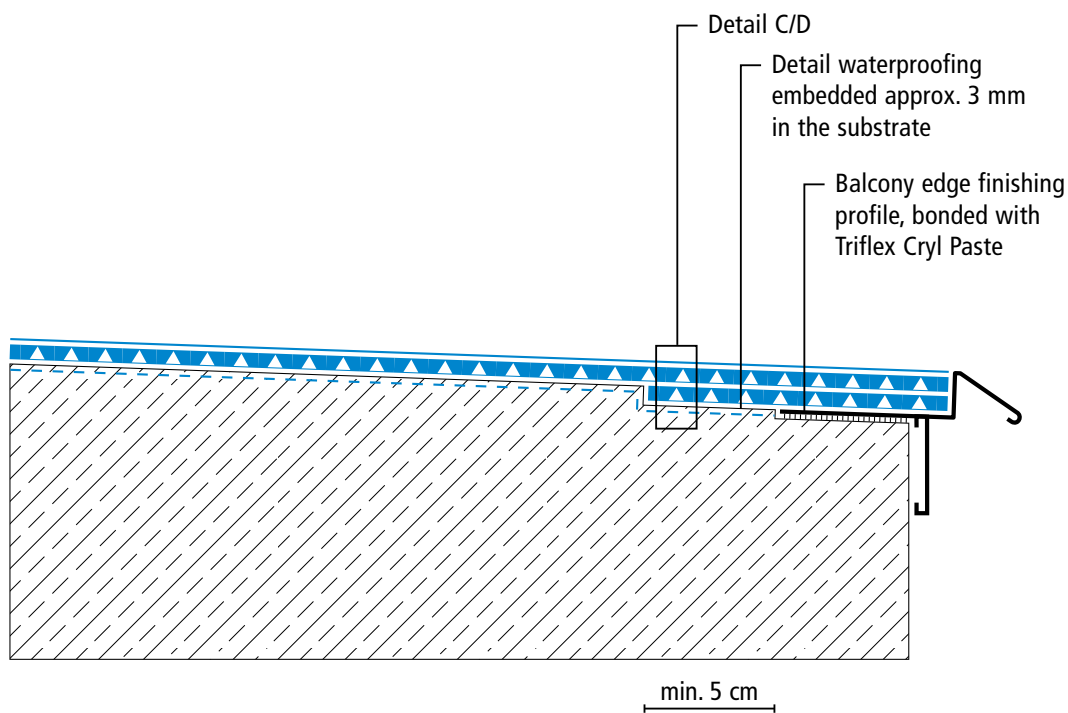
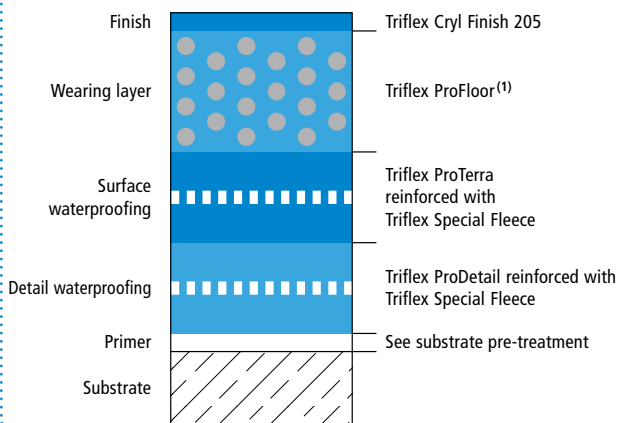




## System drawings

### Leading edge with edge finishing profile

System design – Detail C



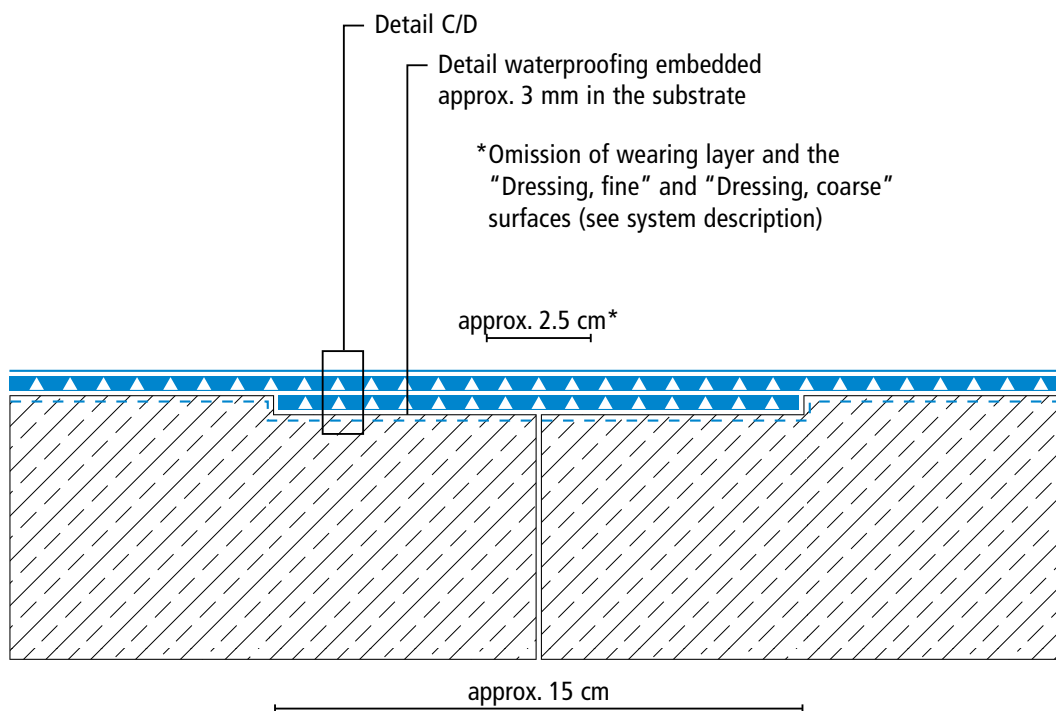
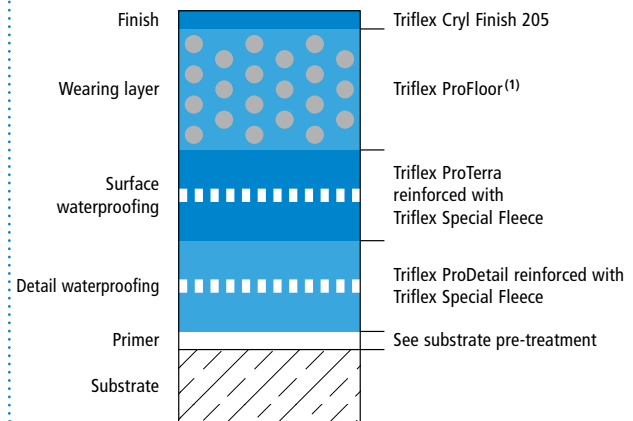
# Triflex BTS-P



## System drawings

### Construction joint

#### System design – Detail C

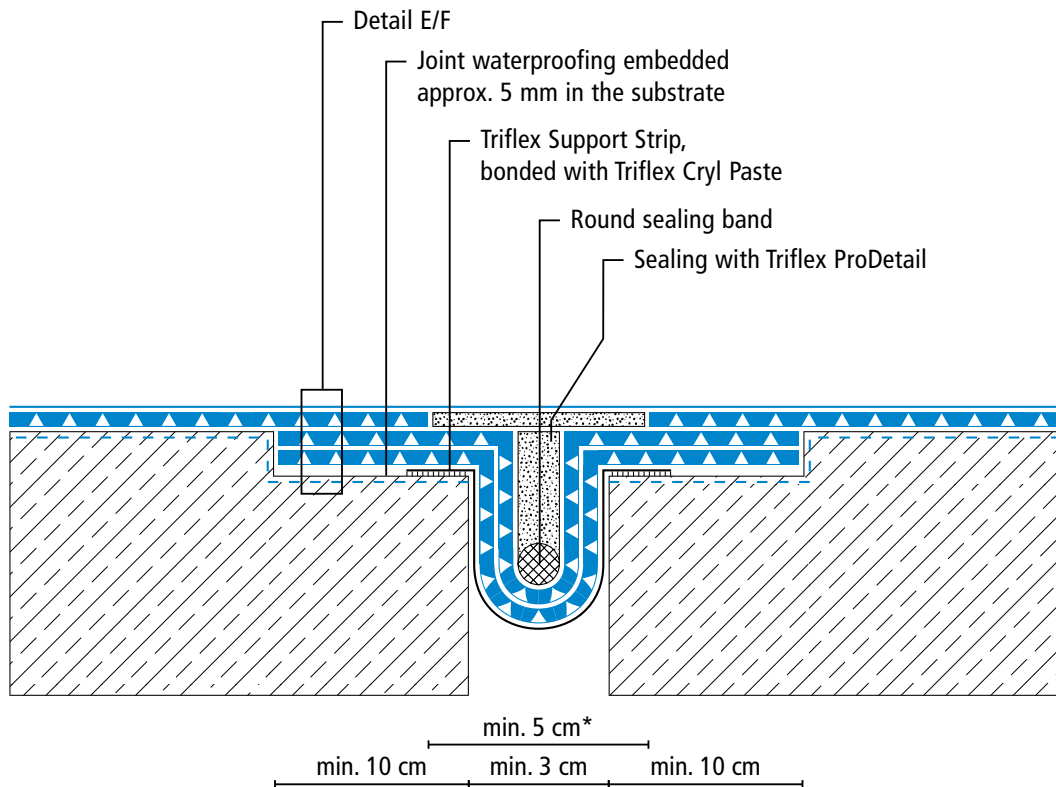
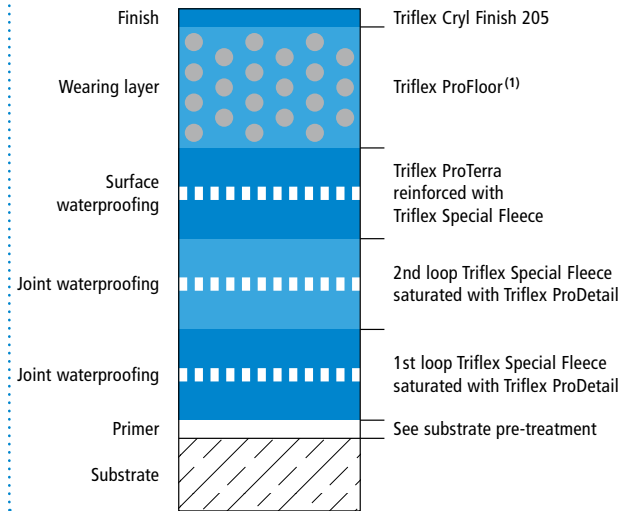




## System drawings

### Settlement joint surface

#### System design – Detail E



Drawing no.: BTS-P-2709

\* Omission of surface waterproofing and wearing layer (see system description)

Height differences between fleece overlaps are exaggerated

<sup>(1)</sup> Triflex ProFloor (3K) or Triflex ProFloor RS 2K

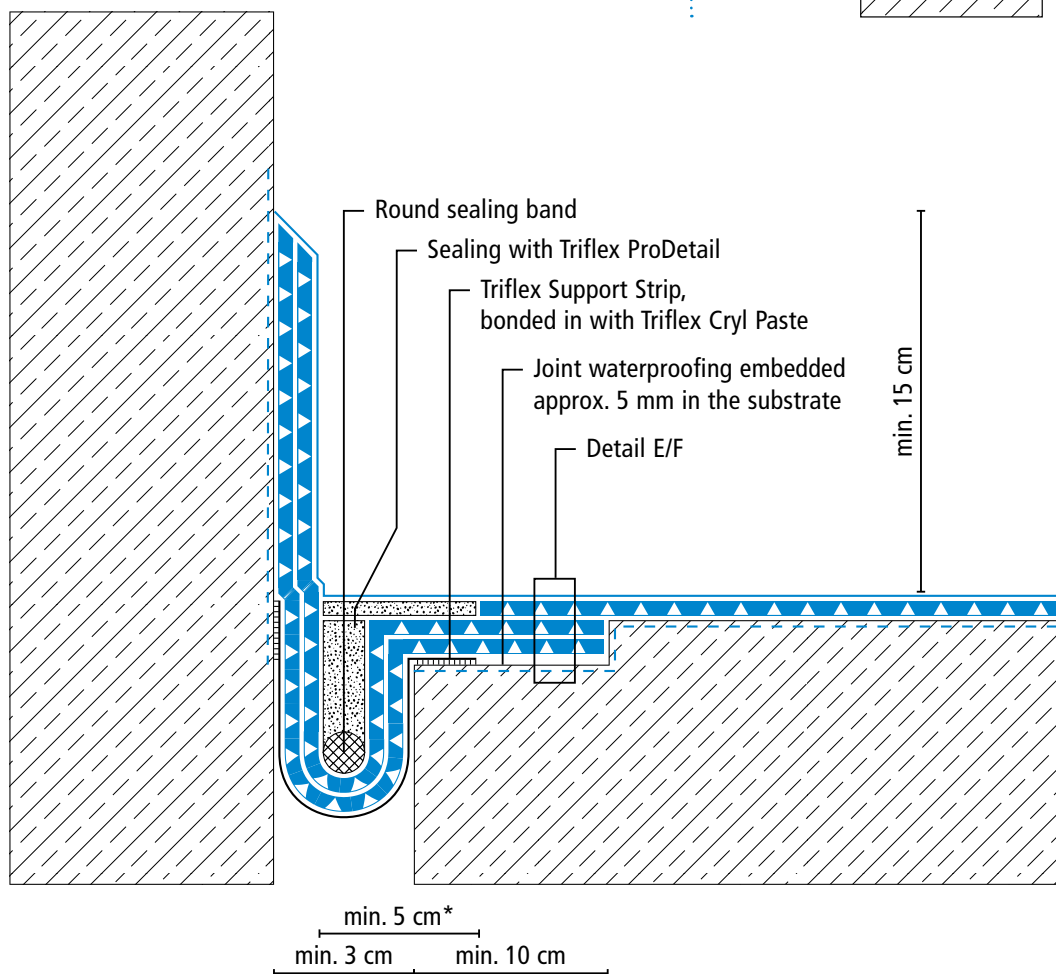
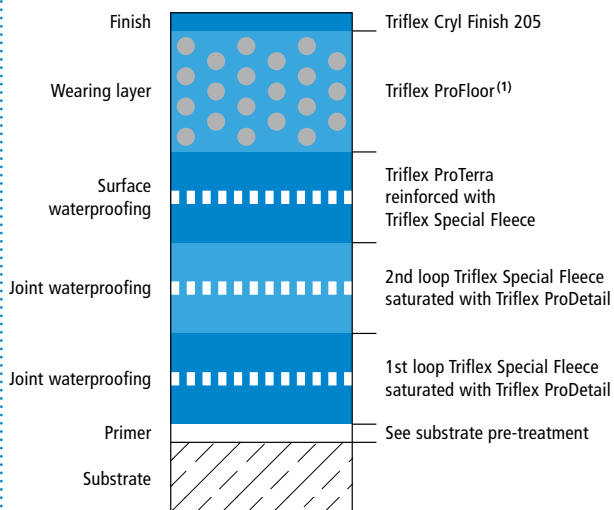




## System drawings

### Settlement joint – wall junction

#### System design – Detail E



Drawing no.: BTS-P-2710

\* Omission of surface waterproofing and wearing layer (see system description)

Height differences between fleece overlaps are exaggerated

(1) Triflex ProFloor (3K) or Triflex ProFloor RS 2K